



Summary of Key Listing and Sales Metrics

A summary of the key metrics selected to be included in the report. MLS sources where licensed.

Key Metrics	Feb 2022	Feb 2021	+ / -	YTD 2022	YTD 2021	+ / -
Listing Activity Charts Metrics						
New Listing Count	164	192	-14.6%	341	358	-4.7%
New Listing Volume	\$40,876,308	\$39,028,352	+4.7%	\$82,350,258	\$73,846,994	+11.5%
Active Listing Count	86	354	-75.7%	N/A	N/A	
Active Listing Volume	\$25,384,487	\$87,744,225	-71.1%	N/A	N/A	
Average Listing Price	\$295,168	\$247,865	+19.1%	\$294,866	\$248,313	+18.7%
Months of Inventory	0.5	1.8	-73.1%	0.8	2.7	-70.5%
Sales Activity Charts Metrics						
Closed Sales Count	138	150	-8%	318	349	-8.9%
Closed Sales Volume	\$27,307,267	\$28,378,250	-3.8%	\$63,068,479	\$64,267,811	-1.9%
Average Sales Price	\$197,879	\$189,188	+4.6%	\$198,329	\$184,148	+7.7%
Average Sales Price per Sq Ft	\$115	\$100	+14.2%	\$113	\$96	+17.3%





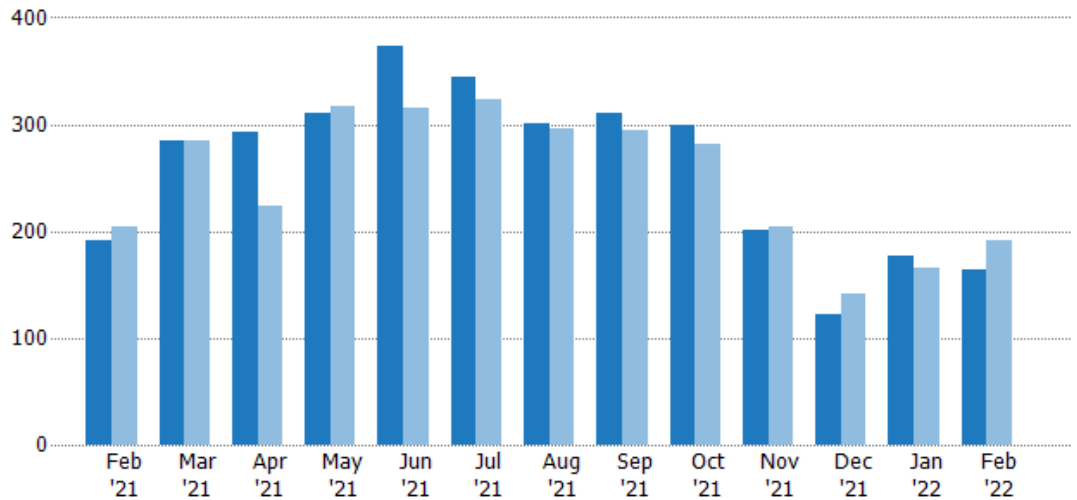
New Listings

The number of new residential listings that were added each month.

Filters Used

Property Type:
Condo/Townhouse/Apt.,
Mobile/Manufactured,
Multifamily/Multiplex, Other
Residential, Single Family

Month/Year	Count	% Chg.
Feb '22	164	-14.6%
Feb '21	192	-6.3%
Feb '20	205	-15.6%



Current Year	192	285	293	311	373	344	301	311	300	201	122	177	164
Prior Year	205	285	224	317	316	324	296	294	281	205	141	166	192
Percent Change from Prior Year	-6%	0%	31%	-2%	18%	6%	2%	6%	7%	-2%	-13%	7%	-15%

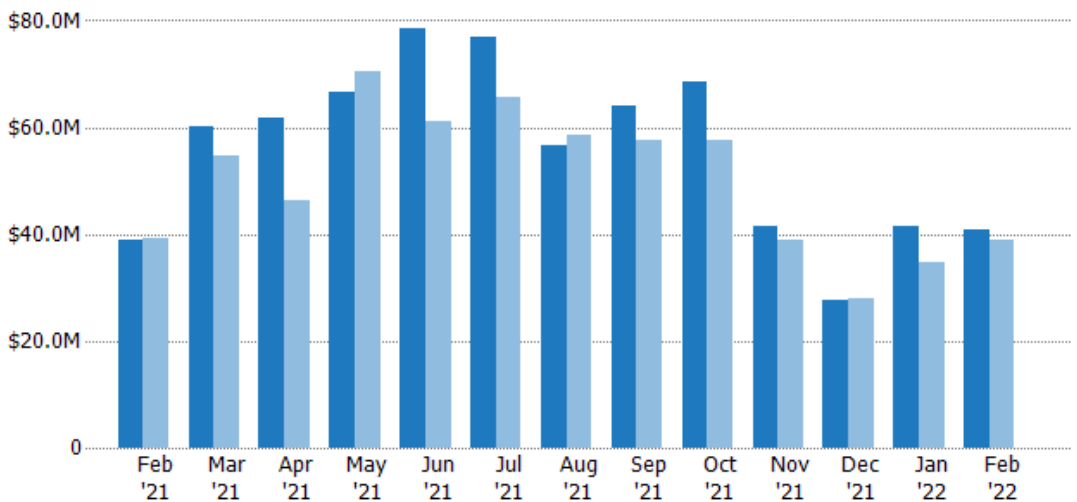
New Listing Volume

The sum of the listing price of residential listings that were added each month.

Filters Used

Property Type:
Condo/Townhouse/Apt.,
Mobile/Manufactured,
Multifamily/Multiplex, Other
Residential, Single Family

Month/Year	Volume	% Chg.
Feb '22	\$40.9M	4.7%
Feb '21	\$39M	-0.7%
Feb '20	\$39.3M	-14.7%



Current Year	\$39M	\$60.2M	\$61.9M	\$66.6M	\$78.7M	\$77.1M	\$56.8M	\$64.1M	\$68.7M	\$41.3M	\$27.5M	\$41.5M	\$40.9M
Prior Year	\$39.3M	\$54.8M	\$46.4M	\$70.6M	\$61M	\$65.6M	\$58.5M	\$57.7M	\$57.6M	\$39M	\$28M	\$34.8M	\$39M
Percent Change from Prior Year	-1%	10%	34%	-6%	29%	17%	-3%	11%	19%	6%	-2%	19%	5%





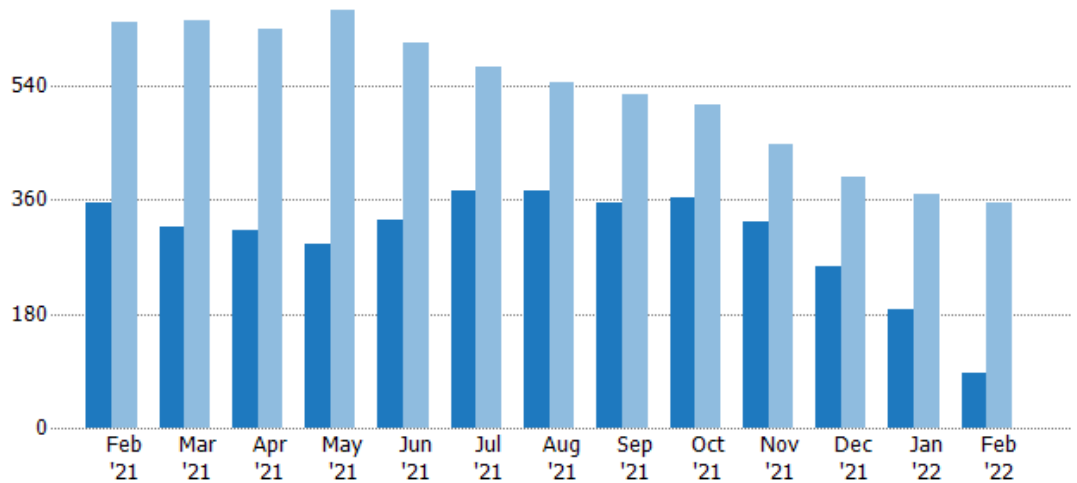
Active Listings

The number of active residential listings at the end of each month.

Filters Used

Property Type:
Condo/Townhouse/Apt.,
Mobile/Manufactured,
Multifamily/Multiplex, Other
Residential, Single Family

Month/Year	Count	% Chg.
Feb '22	86	-75.7%
Feb '21	354	-44.7%
Feb '20	640	-5.2%



Current Year	354	318	313	291	329	374	373	356	364	324	254	187	86
Prior Year	640	642	629	659	609	571	544	526	510	448	395	370	354
Percent Change from Prior Year	-45%	-50%	-50%	-56%	-46%	-35%	-31%	-32%	-29%	-28%	-36%	-49%	-76%

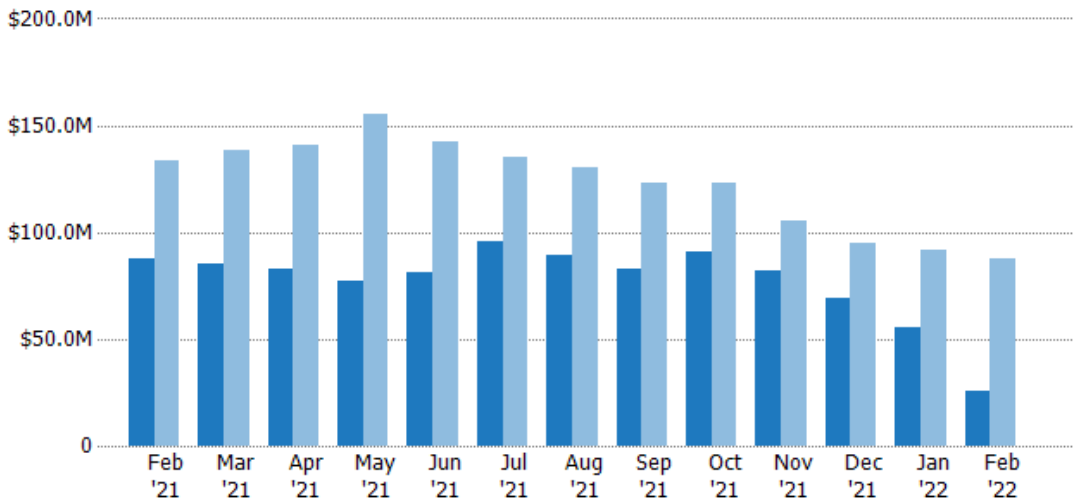
Active Listing Volume

The sum of the listing price of active residential listings at the end of each month.

Filters Used

Property Type:
Condo/Townhouse/Apt.,
Mobile/Manufactured,
Multifamily/Multiplex, Other
Residential, Single Family

Month/Year	Volume	% Chg.
Feb '22	\$25.4M	-71.1%
Feb '21	\$87.7M	-34.2%
Feb '20	\$133M	-4.7%



Current Year	\$87.7M	\$85.5M	\$82.7M	\$77.5M	\$80.8M	\$95.6M	\$89.2M	\$82.4M	\$90.6M	\$82.3M	\$69.3M	\$55.1M	\$25.4M
Prior Year	\$133M	\$139M	\$141M	\$155M	\$142M	\$135M	\$131M	\$123M	\$123M	\$106M	\$94.6M	\$92M	\$87.7M
Percent Change from Prior Year	-34%	-38%	-41%	-50%	-43%	-29%	-32%	-33%	-26%	-22%	-27%	-40%	-71%





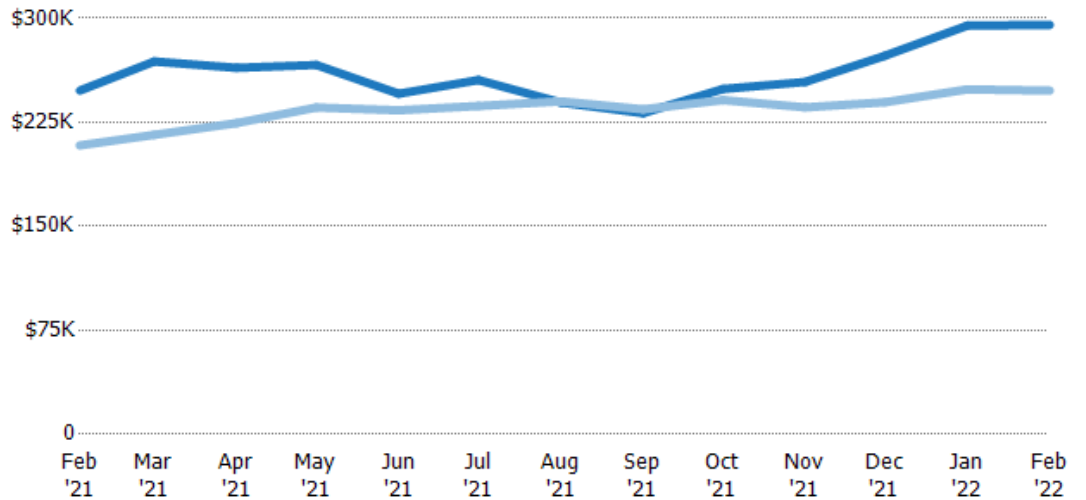
Average Listing Price

The average listing price of active residential listings at the end of each month.

Filters Used

Property Type:
Condo/Townhouse/Apt.,
Mobile/Manufactured,
Multifamily/Multiplex, Other
Residential, Single Family

Month/Year	Price	% Chg.
Feb '22	\$295K	19.1%
Feb '21	\$248K	19%
Feb '20	\$208K	0.4%



Current Year	\$248K	\$269K	\$264K	\$266K	\$246K	\$255K	\$239K	\$232K	\$249K	\$254K	\$273K	\$295K	\$295K
Prior Year	\$208K	\$216K	\$224K	\$236K	\$234K	\$237K	\$240K	\$234K	\$241K	\$236K	\$239K	\$249K	\$248K
Percent Change from Prior Year	19%	25%	18%	13%	5%	8%	0%	-1%	3%	8%	14%	18%	19%

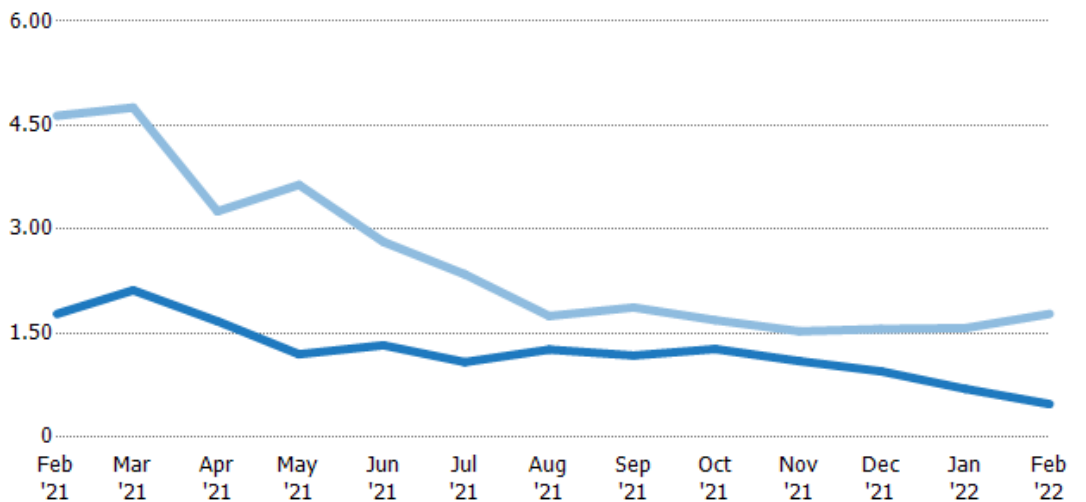
Months of Inventory

The number of months it would take to exhaust active listings at the current sales rate.

Filters Used

Property Type:
Condo/Townhouse/Apt.,
Mobile/Manufactured,
Multifamily/Multiplex, Other
Residential, Single Family

Month/Year	Months	% Chg.
Feb '22	0	-73.1%
Feb '21	1.78	-61.6%
Feb '20	4.64	14.8%



Current Year	1.78	2.12	1.67	1.2	1.33	1.08	1.26	1.18	1.27	1.1	0	0	0
Prior Year	4.64	4.76	3.26	3.64	2.82	2.35	1.75	1.87	1.69	1.53	1.56	1.57	1.78
Percent Change from Prior Year	-62%	-55%	-49%	-67%	-53%	-54%	-28%	-37%	-25%	-28%	-39%	-56%	-73%



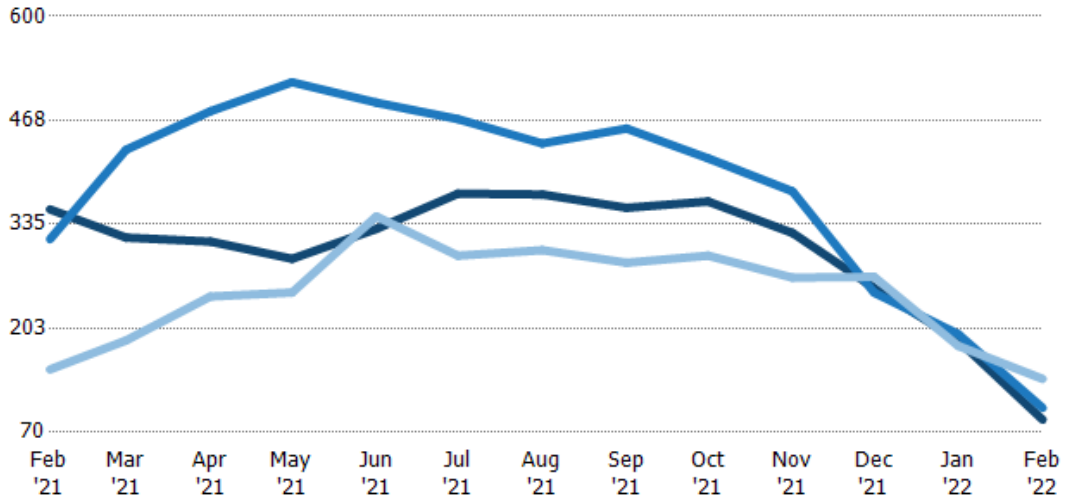


Active/Pending/Sold Units

The number of residential properties that were Active, Pending and Sold each month.

Filters Used

Property Type:
Condo/Townhouse/Apt.,
Mobile/Manufactured,
Multifamily/Multiplex, Other
Residential, Single Family



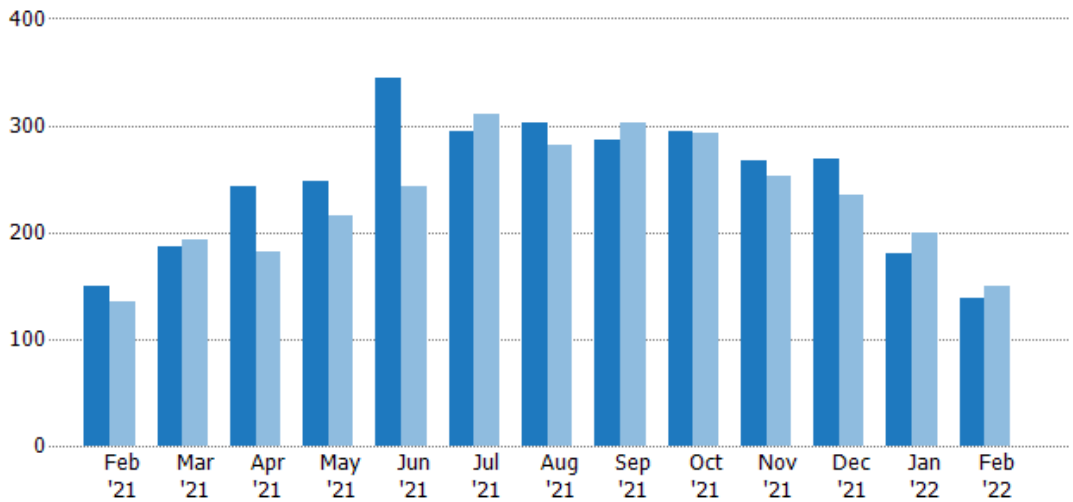
Active	354	318	313	291	329	374	373	356	364	324	254	187	86
Pending	316	430	479	516	490	469	438	457	419	377	248	195	101
Sold	150	187	243	248	345	295	302	286	295	267	268	180	138

Closed Sales

The total number of residential properties sold each month.

Filters Used

Property Type:
Condo/Townhouse/Apt.,
Mobile/Manufactured,
Multifamily/Multiplex, Other
Residential, Single Family



Current Year	150	187	243	248	345	295	302	286	295	267	268	180	138
Prior Year	135	193	181	216	243	311	281	302	293	253	235	199	150
Percent Change from Prior Year	11%	-3%	34%	15%	42%	-5%	7%	-5%	1%	6%	14%	-10%	-8%





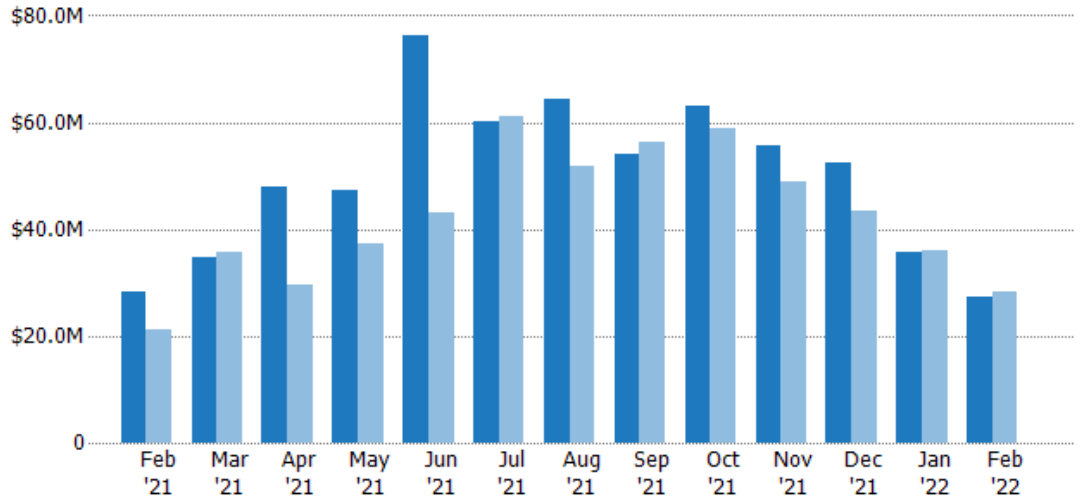
Closed Sales Volume

The sum of the sales price of residential properties sold each month.

Filters Used

Property Type:
Condo/Townhouse/Apt.,
Mobile/Manufactured,
Multifamily/Multiplex, Other
Residential, Single Family

Month/ Year	Volume	% Chg.
Feb '22	\$27.3M	-3.8%
Feb '21	\$28.4M	33.1%
Feb '20	\$21.3M	-11%



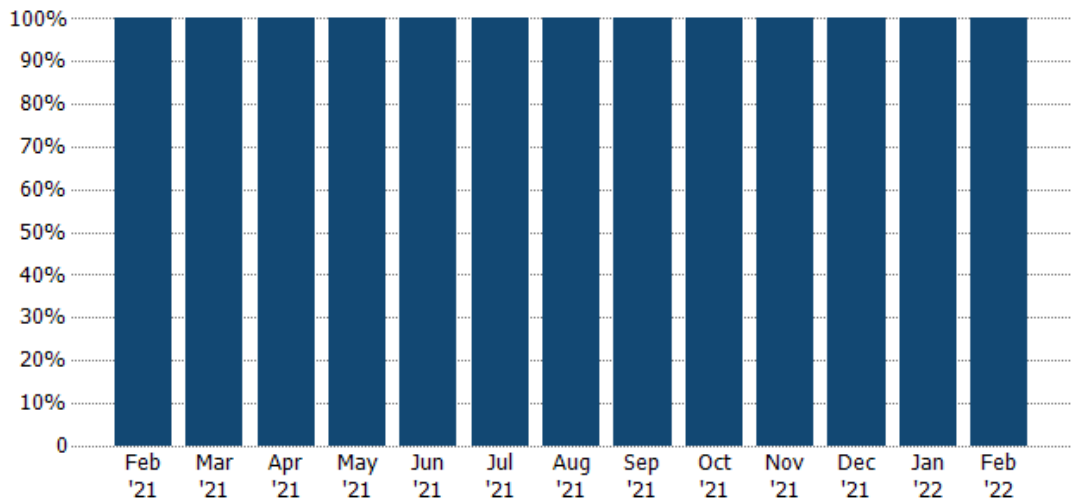
Current Year	\$28.4M	\$34.8M	\$48M	\$47.3M	\$76.2M	\$60.3M	\$64.5M	\$54M	\$63M	\$55.8M	\$52.4M	\$35.8M	\$27.3M
Prior Year	\$21.3M	\$35.7M	\$29.6M	\$37.3M	\$43.1M	\$61.1M	\$51.7M	\$56.3M	\$58.8M	\$48.9M	\$43.5M	\$35.9M	\$28.4M
Percent Change from Prior Year	33%	-3%	63%	27%	77%	-1%	25%	-4%	7%	14%	20%	0%	-4%

Closed Sales by Property Type

The percentage of residential properties sold each month by property type.

Filters Used

Property Type:
Condo/Townhouse/Apt.,
Mobile/Manufactured,
Multifamily/Multiplex, Other
Residential, Single Family



Single Family Residence	100%	100%	100%	100%	100%	100%	100%	100%	100%	100%	100%	100%	100%
-------------------------	------	------	------	------	------	------	------	------	------	------	------	------	------

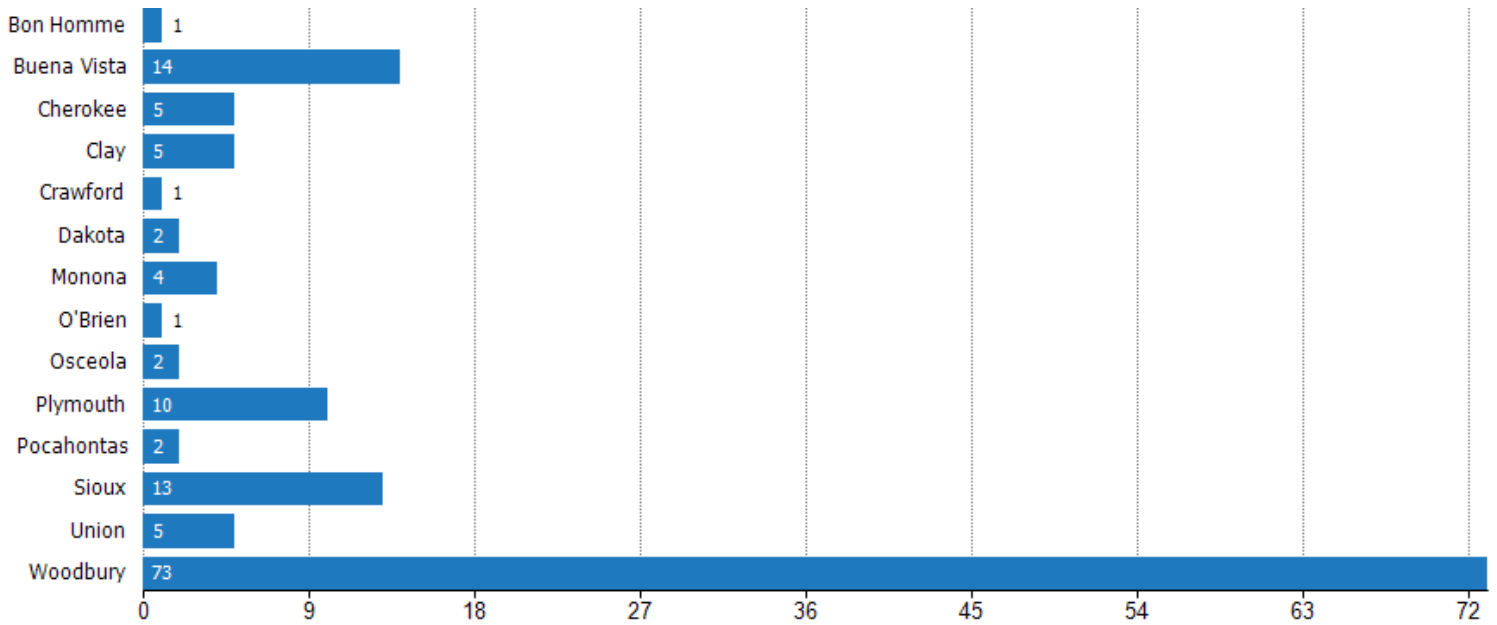




Closed Sales (By County)

The total number of residential properties sold during the last month by county.

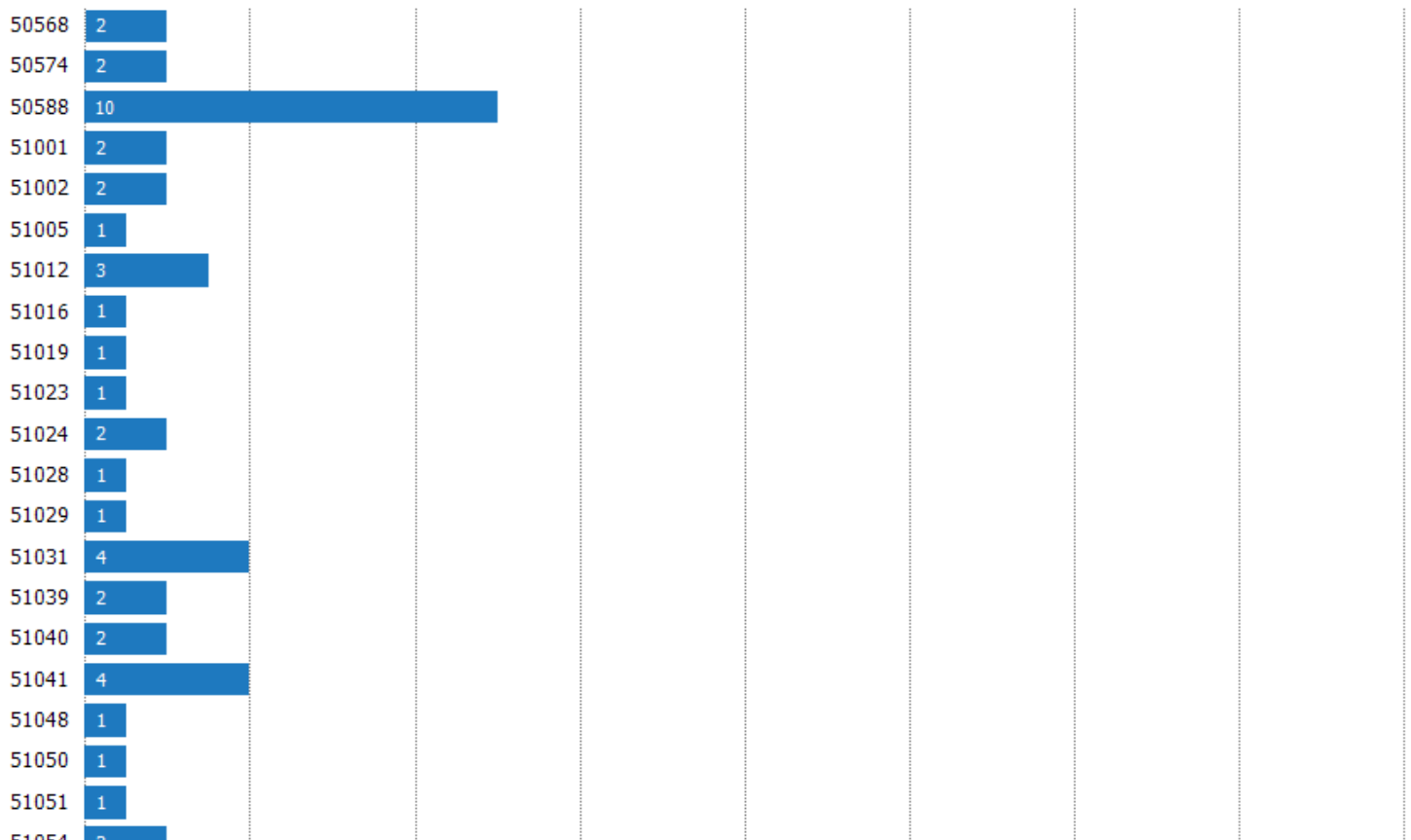
Filters Used: Property Type: Condo/Townhouse/Apt., Mobile/Manufactured, Multifamily/Multiplex, Other Residential, Single Family

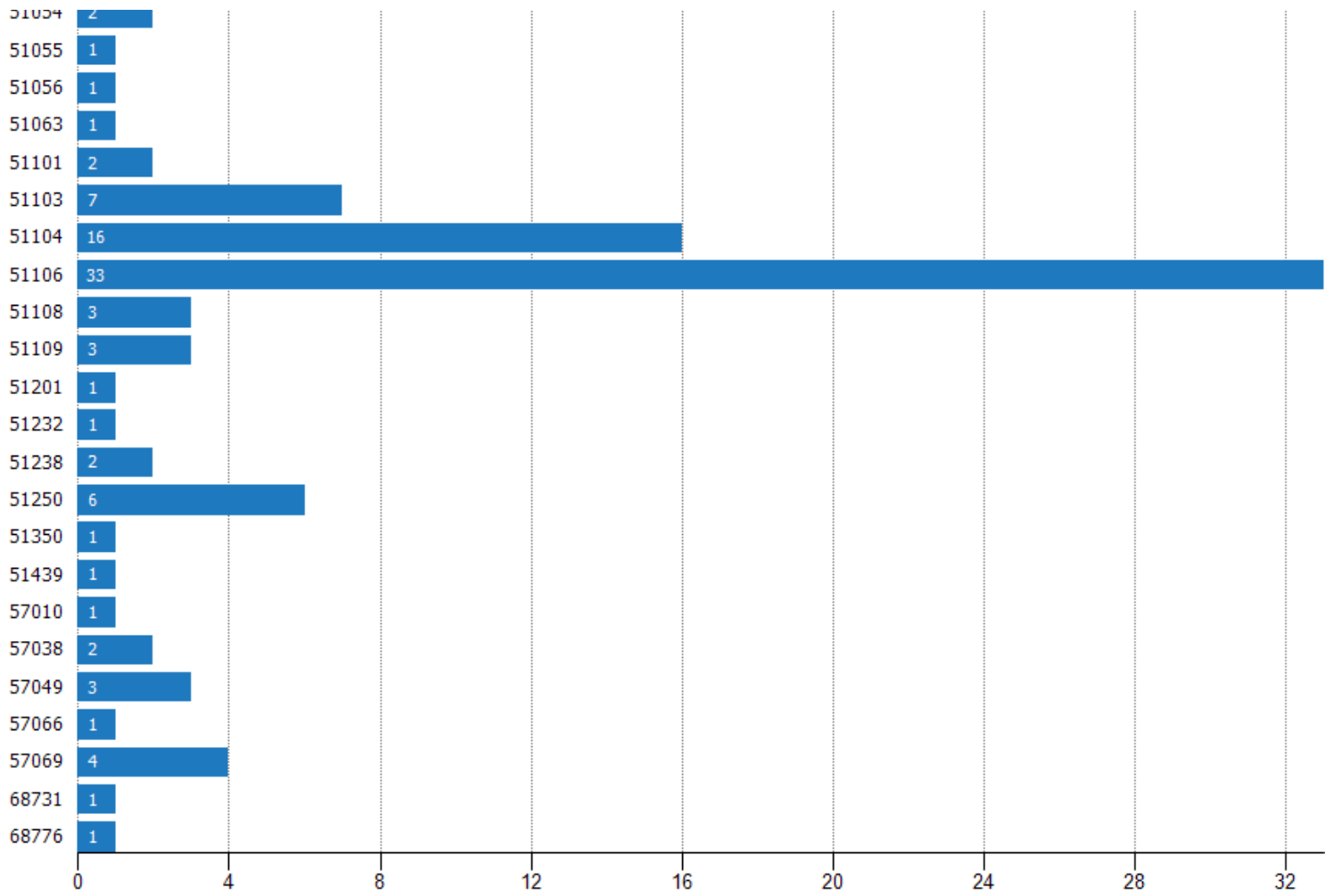


Closed Sales (By Zip)

The total number of residential properties sold during the last month by zip.

Filters Used: Property Type: Condo/Townhouse/Apt., Mobile/Manufactured, Multifamily/Multiplex, Other Residential, Single Family





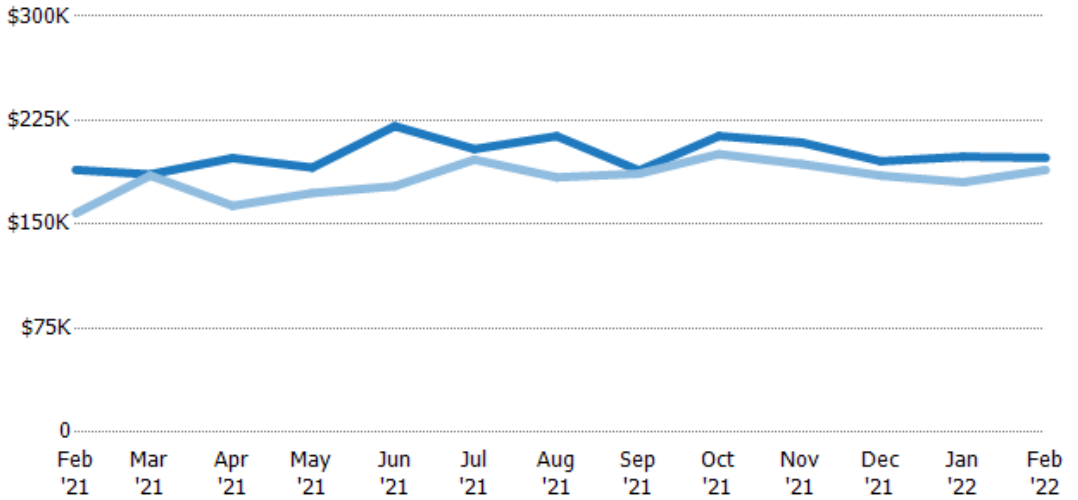


Average Sales Price

The average sales price of the residential properties sold each month.

Filters Used

Property Type:
Condo/Townhouse/Apt.,
Mobile/Manufactured,
Multifamily/Multiplex, Other
Residential, Single Family



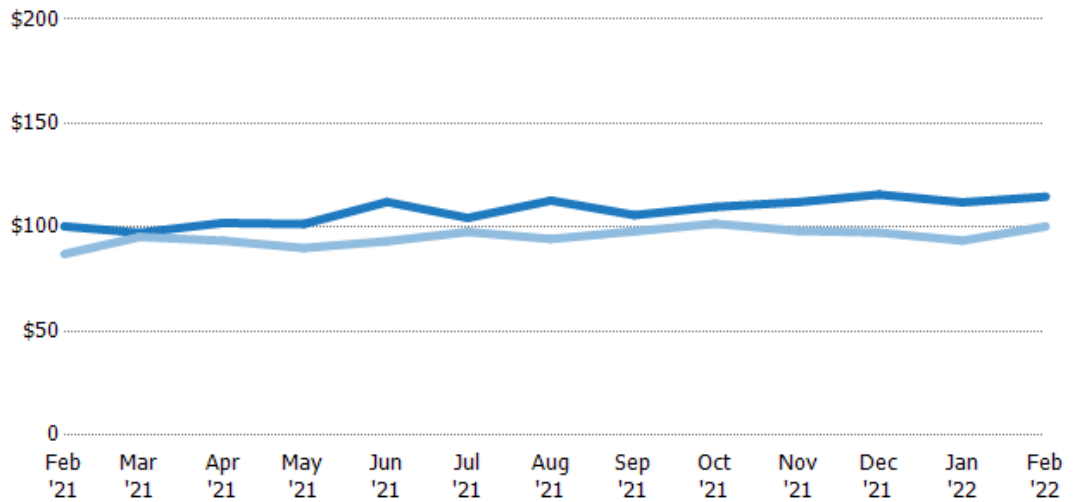
	Feb '21	Mar '21	Apr '21	May '21	Jun '21	Jul '21	Aug '21	Sep '21	Oct '21	Nov '21	Dec '21	Jan '22	Feb '22
Current Year	\$189K	\$186K	\$198K	\$191K	\$221K	\$204K	\$214K	\$189K	\$214K	\$209K	\$195K	\$199K	\$198K
Prior Year	\$158K	\$185K	\$163K	\$172K	\$177K	\$197K	\$184K	\$187K	\$201K	\$193K	\$185K	\$180K	\$189K
Percent Change from Prior Year	20%	0%	21%	11%	24%	4%	16%	1%	6%	8%	6%	10%	5%

Average Sales Price per Sq Ft

The average of the sales price divided by the living area of properties sold each month.

Filters Used

Property Type:
Condo/Townhouse/Apt.,
Mobile/Manufactured,
Multifamily/Multiplex, Other
Residential, Single Family



	Feb '21	Mar '21	Apr '21	May '21	Jun '21	Jul '21	Aug '21	Sep '21	Oct '21	Nov '21	Dec '21	Jan '22	Feb '22
Current Year	\$100	\$97.4	\$102	\$102	\$112	\$104	\$113	\$106	\$110	\$112	\$116	\$112	\$115
Prior Year	\$87.1	\$95.3	\$93.5	\$90	\$93.3	\$97.7	\$94.4	\$98	\$102	\$98.2	\$97.4	\$93.6	\$100
Percent Change from Prior Year	15%	2%	9%	13%	20%	7%	20%	8%	8%	14%	19%	20%	14%



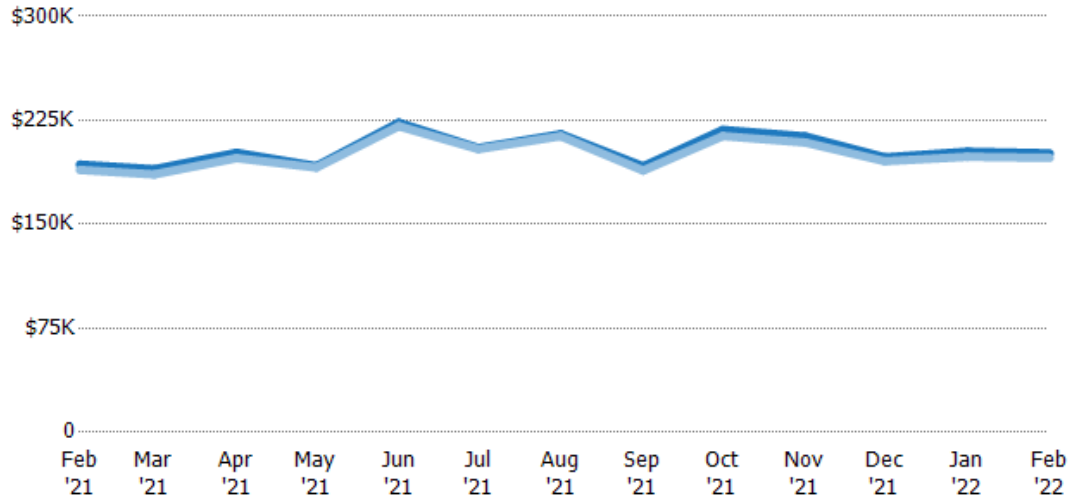


Average Sales Price vs Average Listing Price

The average sales price as a percentage of the average listing price for properties sold each month.

Filters Used

Property Type:
Condo/Townhouse/Apt.,
Mobile/Manufactured,
Multifamily/Multiplex, Other
Residential, Single Family



	Feb '21	Mar '21	Apr '21	May '21	Jun '21	Jul '21	Aug '21	Sep '21	Oct '21	Nov '21	Dec '21	Jan '22	Feb '22
Avg List Price	\$193K	\$190K	\$202K	\$192K	\$223K	\$205K	\$215K	\$192K	\$218K	\$213K	\$198K	\$202K	\$201K
Avg Sales Price	\$189K	\$186K	\$198K	\$191K	\$221K	\$204K	\$214K	\$189K	\$214K	\$209K	\$195K	\$199K	\$198K
Avg Sales Price as a % of Avg List Price	98%	98%	98%	99%	99%	100%	99%	98%	98%	98%	99%	98%	98%





Appendix

The metrics that are calculated by RPR® may show the same general trends as those published by other sources (i.e. MLS, Associations or vendors), but because of our processes and parcel-centric approach, some variation may occur. Data sources include MLS's, where licensed, and public records for more in-depth metrics on distressed properties.

Report Details

Report Name: NBS Report

Run Date: 03/04/2022

Scheduled: Yes

Report Date Range: From 2/2021 To: 2/2022

Information Included

- Include Cover Sheet
- Include Key Metric Summary *
- Include Metrics By: County, ZIP Code
- Averages
- Include Appendix
- Medians

* The Key Metrics Table's YTD median calculations are calculated using a weighted average of the median values for each month that is included.

MLS Filter

MLS: All

Listing Filters

Property Types: Condo/Townhouse/Apt. Mobile/Manufactured Multifamily/Multiplex
 Other Residential Single Family

Sales Types: All

Price Range: None

Location Filters

State: All

County: All

ZIP Code: All

Listing Activity Charts

- New Listings
- Active Listings
- Average Listing Price
- Average Listing Price per Sq Ft
- Average Listing Price vs Est Value
- Median Days in RPR
- Months of Inventory
- Absorption Rate

Sales Activity Charts

- Active/Pending/Sold
- New Pending Sales
- Pending Sales
- Closed Sales
- Average Sales Price
- Average Sales Price per Sq Ft
- Average Sales Price vs Listing Price
- Average Sales Price vs Est Value

Distressed Charts

- Distressed Listings
- Distressed Sales

Data Tables Using 2/2022 data

- Listing Activity by ZIP
- Listing Activity by Metro Area
- Sales Activity by ZIP
- Sales Activity by Metro Area

