



Summary of Key Listing and Sales Metrics

A summary of the key metrics selected to be included in the report. MLS sources where licensed.

Key Metrics	Jan 2022	Jan 2021	+ / -	YTD 2022	YTD 2021	+ / -
Listing Activity Charts Metrics						
New Listing Count	179	168	+6.5%	3,389	3,276	+3.4%
New Listing Volume	\$42,192,140	\$35,153,542	+20%	\$721,823,223	\$653,864,460	+10.4%
Active Listing Count	97	371	-73.9%	N/A	N/A	
Active Listing Volume	\$23,755,051	\$92,261,480	-74.3%	N/A	N/A	
Average Listing Price	\$244,897	\$248,683	-1.5%	\$252,147	\$228,915	+10.1%
Months of Inventory	0.4	1.6	-77.2%	0.5	2.7	-81.9%
Sales Activity Charts Metrics						
Closed Sales Count	176	199	-11.6%	3,268	2,984	+9.5%
Closed Sales Volume	\$35,067,712	\$35,889,561	-2.3%	\$657,117,580	\$546,371,500	+20.3%
Average Sales Price	\$199,248	\$180,350	+10.5%	\$201,076	\$183,100	+9.8%
Average Sales Price per Sq Ft	\$113	\$94	+20.3%	\$107	\$95	+12.2%





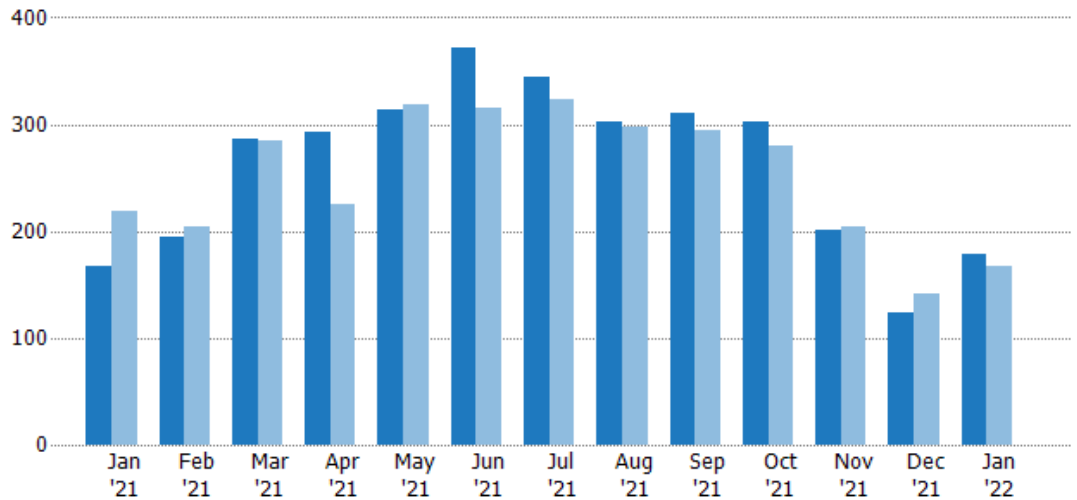
New Listings

The number of new residential listings that were added each month.

Filters Used

Property Type:
Condo/Townhouse/Apt.,
Mobile/Manufactured,
Multifamily/Multiplex, Other
Residential, Single Family

Month/Year	Count	% Chg.
Jan '22	179	6.5%
Jan '21	168	-22.9%
Jan '20	218	-6.4%



Current Year	168	194	286	293	313	371	345	302	311	302	201	124	179
Prior Year	218	205	285	225	318	316	324	297	294	280	205	141	168
Percent Change from Prior Year	-23%	-5%	0%	30%	-2%	17%	6%	2%	6%	8%	-2%	-12%	7%

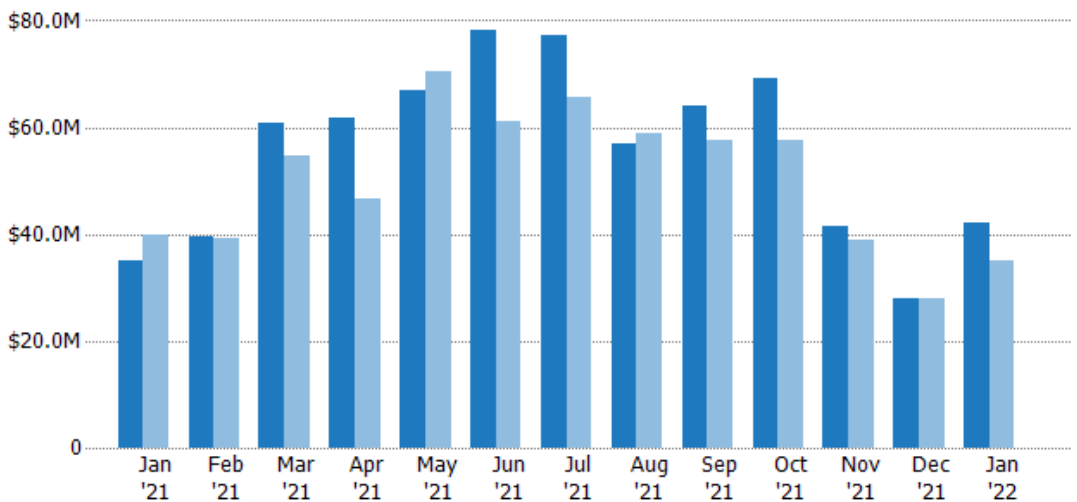
New Listing Volume

The sum of the listing price of residential listings that were added each month.

Filters Used

Property Type:
Condo/Townhouse/Apt.,
Mobile/Manufactured,
Multifamily/Multiplex, Other
Residential, Single Family

Month/Year	Volume	% Chg.
Jan '22	\$42.2M	20%
Jan '21	\$35.2M	-12.1%
Jan '20	\$40M	-5.1%



Current Year	\$35.2M	\$39.7M	\$60.8M	\$61.9M	\$66.9M	\$78.3M	\$77.2M	\$57M	\$64.1M	\$69.3M	\$41.4M	\$27.8M	\$42.2M
Prior Year	\$40M	\$39.3M	\$54.7M	\$46.6M	\$70.6M	\$61M	\$65.6M	\$58.7M	\$57.7M	\$57.5M	\$39M	\$28M	\$35.2M
Percent Change from Prior Year	-12%	1%	11%	33%	-5%	28%	18%	-3%	11%	21%	6%	-1%	20%





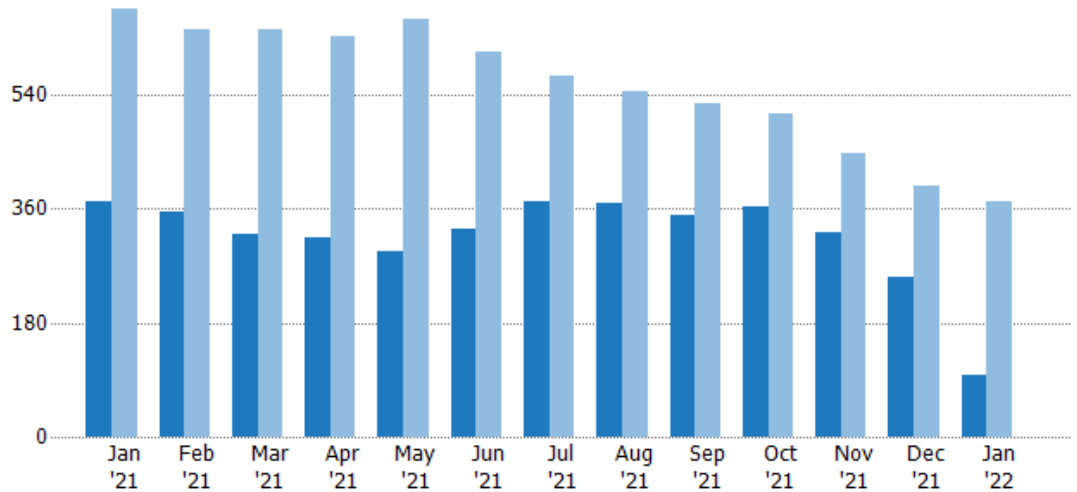
Active Listings

The number of active residential listings at the end of each month.

Filters Used

Property Type:
Condo/Townhouse/Apt.,
Mobile/Manufactured,
Multifamily/Multiplex, Other
Residential, Single Family

Month/Year	Count	% Chg.
Jan '22	97	-73.9%
Jan '21	371	-45.1%
Jan '20	676	-3.3%



Current Year	371	356	321	315	293	329	372	370	351	362	322	251	97
Prior Year	676	643	643	631	660	609	571	544	526	509	448	395	371
Percent Change from Prior Year	-45%	-45%	-50%	-50%	-56%	-46%	-35%	-32%	-33%	-29%	-28%	-36%	-74%

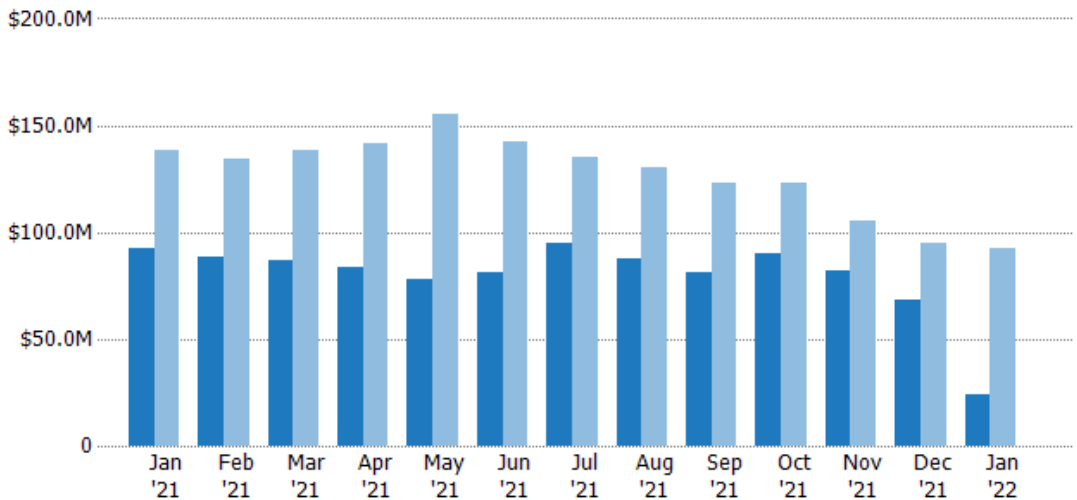
Active Listing Volume

The sum of the listing price of active residential listings at the end of each month.

Filters Used

Property Type:
Condo/Townhouse/Apt.,
Mobile/Manufactured,
Multifamily/Multiplex, Other
Residential, Single Family

Month/Year	Volume	% Chg.
Jan '22	\$23.8M	-74.3%
Jan '21	\$92.3M	-33.4%
Jan '20	\$138M	-3.8%



Current Year	\$92.3M	\$88.3M	\$86.5M	\$83.5M	\$77.7M	\$80.8M	\$94.7M	\$87.9M	\$80.8M	\$89.8M	\$81.8M	\$68.7M	\$23.8M
Prior Year	\$138M	\$134M	\$139M	\$141M	\$155M	\$142M	\$135M	\$131M	\$123M	\$123M	\$106M	\$94.5M	\$92.3M
Percent Change from Prior Year	-33%	-34%	-38%	-41%	-50%	-43%	-30%	-33%	-34%	-27%	-23%	-27%	-74%



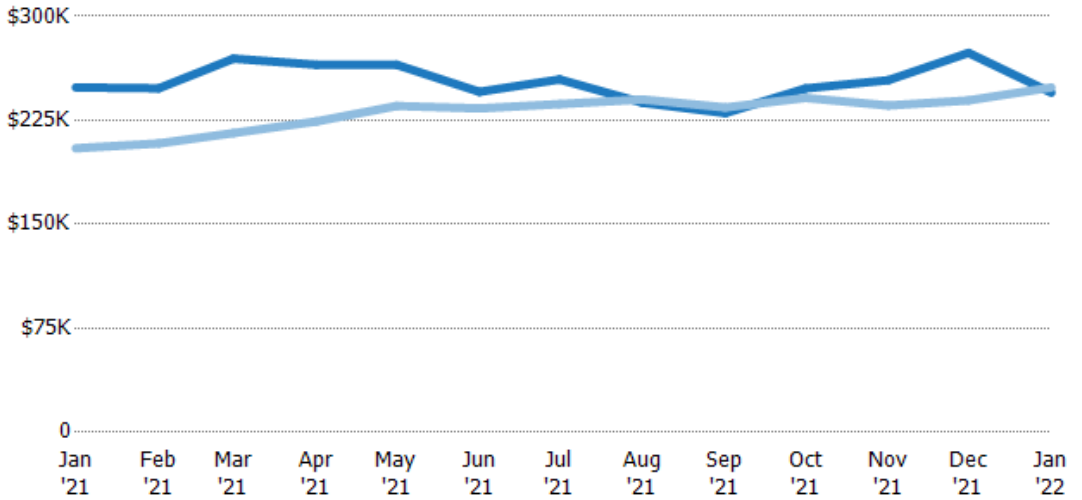


Average Listing Price

The average listing price of active residential listings at the end of each month.

Filters Used

Property Type:
Condo/Townhouse/Apt.,
Mobile/Manufactured,
Multifamily/Multiplex, Other
Residential, Single Family



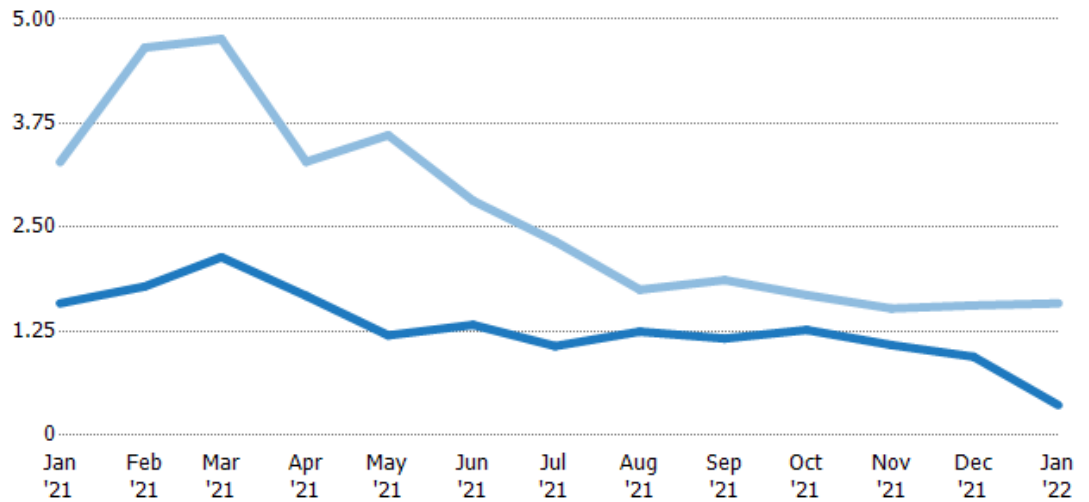
Month/Year	Current Year Price	Prior Year Price	Percent Change from Prior Year
Jan '21	\$249K	\$205K	21%
Feb '21	\$248K	\$208K	19%
Mar '21	\$269K	\$216K	25%
Apr '21	\$265K	\$224K	18%
May '21	\$265K	\$235K	13%
Jun '21	\$246K	\$234K	5%
Jul '21	\$254K	\$237K	8%
Aug '21	\$238K	\$240K	-1%
Sep '21	\$230K	\$234K	-2%
Oct '21	\$248K	\$241K	3%
Nov '21	\$254K	\$236K	8%
Dec '21	\$274K	\$239K	14%
Jan '22	\$245K	\$249K	-2%

Months of Inventory

The number of months it would take to exhaust active listings at the current sales rate.

Filters Used

Property Type:
Condo/Townhouse/Apt.,
Mobile/Manufactured,
Multifamily/Multiplex, Other
Residential, Single Family



Month/Year	Current Year Months	Prior Year Months	Percent Change from Prior Year
Jan '21	1.59	3.28	-52%
Feb '21	1.79	4.66	-62%
Mar '21	2.14	4.76	-55%
Apr '21	1.68	3.29	-49%
May '21	1.2	3.61	-67%
Jun '21	1.33	2.82	-53%
Jul '21	1.07	2.33	-54%
Aug '21	1.25	1.75	-29%
Sep '21	1.16	1.87	-38%
Oct '21	1.27	1.69	-25%
Nov '21	1.08	1.52	-29%
Dec '21	0	1.56	-40%
Jan '22	0	1.59	-77%



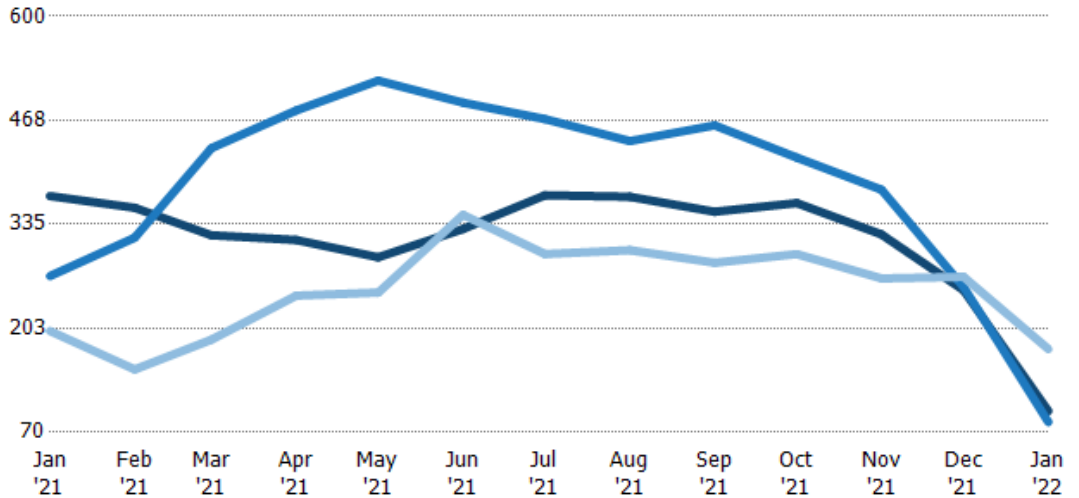


Active/Pending/Sold Units

The number of residential properties that were Active, Pending and Sold each month.

Filters Used

Property Type:
Condo/Townhouse/Apt.,
Mobile/Manufactured,
Multifamily/Multiplex, Other
Residential, Single Family



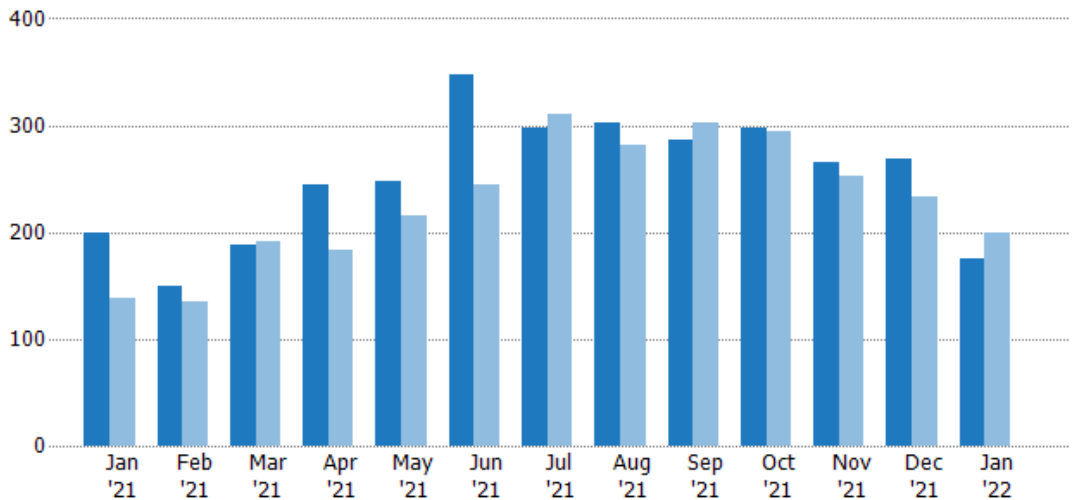
Active	371	356	321	315	293	329	372	370	351	362	322	251	97
Pending	269	318	432	480	518	490	469	441	461	420	379	255	83
Sold	199	150	188	244	248	347	297	302	286	297	266	268	176

Closed Sales

The total number of residential properties sold each month.

Filters Used

Property Type:
Condo/Townhouse/Apt.,
Mobile/Manufactured,
Multifamily/Multiplex, Other
Residential, Single Family



Current Year	199	150	188	244	248	347	297	302	286	297	266	268	176
Prior Year	138	135	192	183	216	245	311	282	302	294	253	234	199
Percent Change from Prior Year	44%	11%	-2%	33%	15%	42%	-5%	7%	-5%	1%	5%	15%	-12%





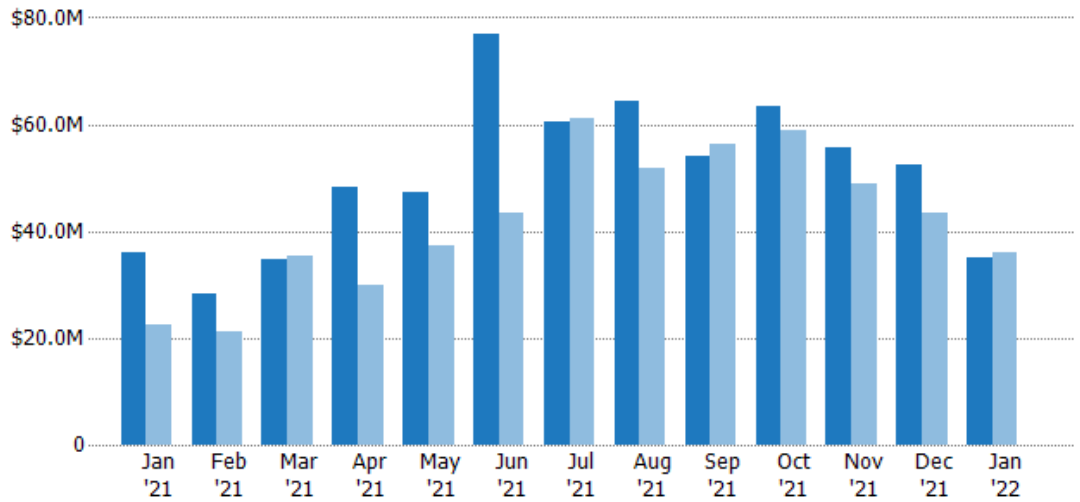
Closed Sales Volume

The sum of the sales price of residential properties sold each month.

Filters Used

Property Type:
Condo/Townhouse/Apt.,
Mobile/Manufactured,
Multifamily/Multiplex, Other
Residential, Single Family

Month/Year	Volume	% Chg.
Jan '22	\$35.1M	-2.3%
Jan '21	\$35.9M	59.2%
Jan '20	\$22.5M	-17.9%



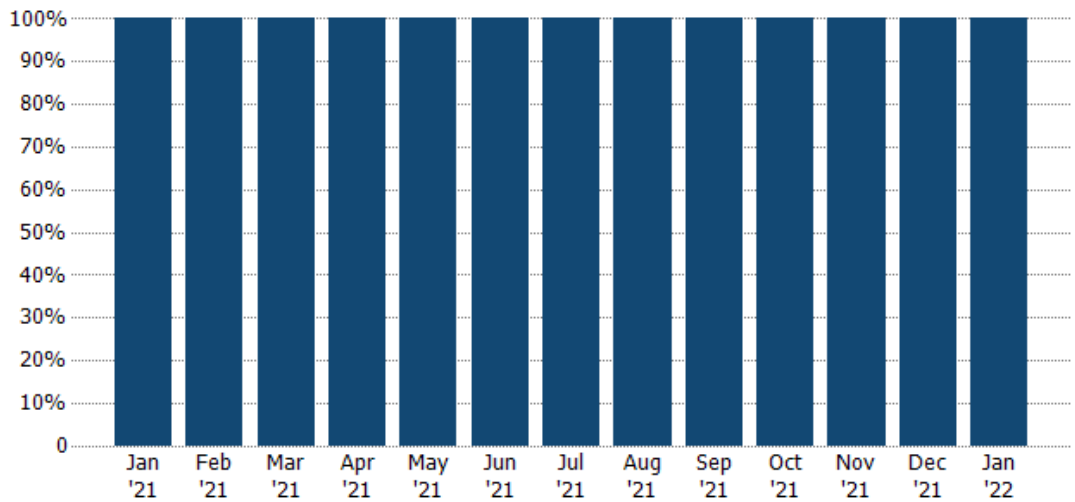
Current Year	\$35.9M	\$28.4M	\$34.8M	\$48.4M	\$47.3M	\$77.1M	\$60.5M	\$64.2M	\$54M	\$63.3M	\$55.7M	\$52.4M	\$35.1M
Prior Year	\$22.5M	\$21.3M	\$35.4M	\$30M	\$37.3M	\$43.5M	\$61.1M	\$51.7M	\$56.3M	\$59M	\$48.9M	\$43.4M	\$35.9M
Percent Change from Prior Year	59%	33%	-2%	61%	27%	77%	-1%	24%	-4%	7%	14%	21%	-2%

Closed Sales by Property Type

The percentage of residential properties sold each month by property type.

Filters Used

Property Type:
Condo/Townhouse/Apt.,
Mobile/Manufactured,
Multifamily/Multiplex, Other
Residential, Single Family



Single Family Residence	100%	100%	100%	100%	100%	100%	100%	100%	100%	100%	100%	100%	100%
-------------------------	------	------	------	------	------	------	------	------	------	------	------	------	------

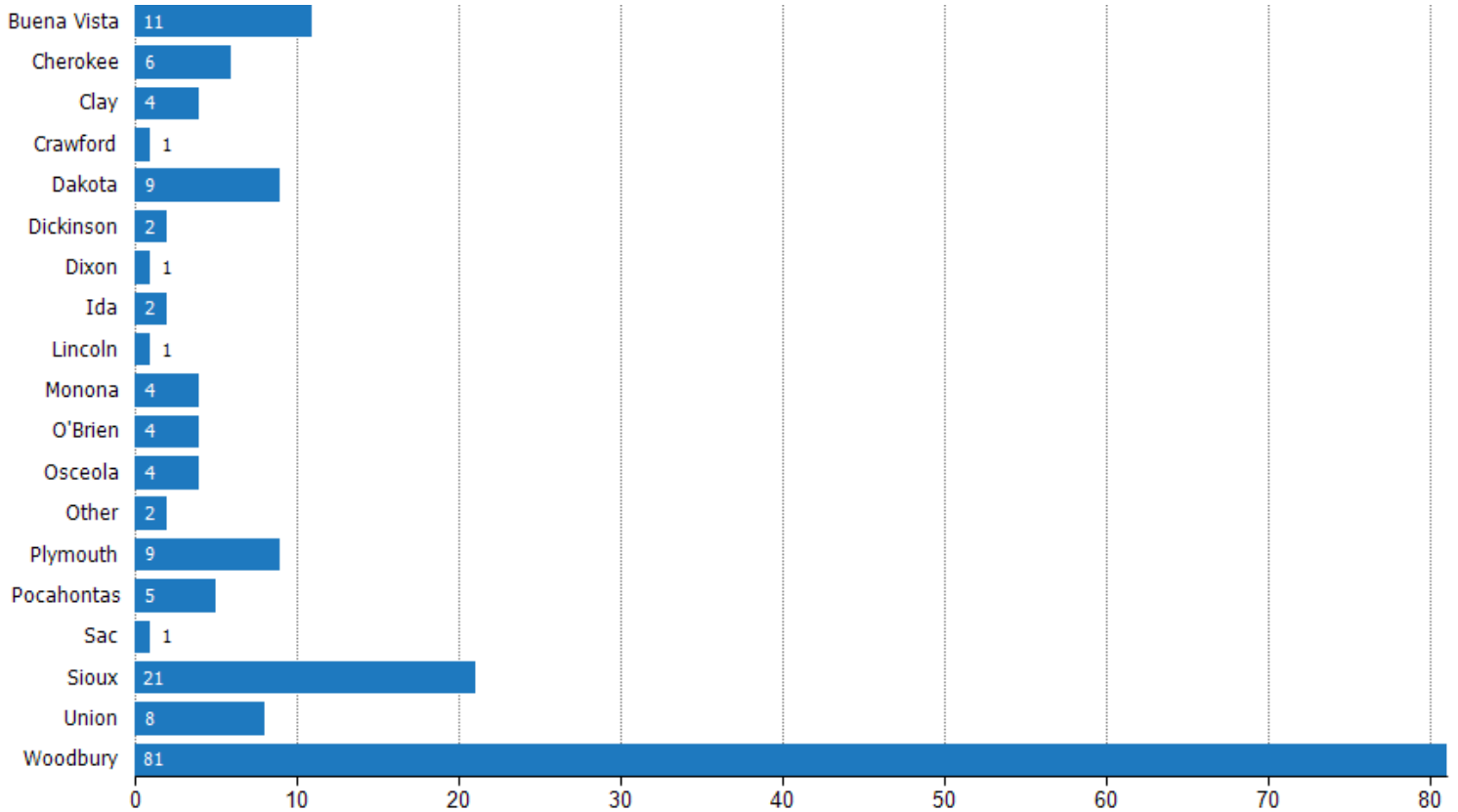




Closed Sales (By County)

The total number of residential properties sold during the last month by county.

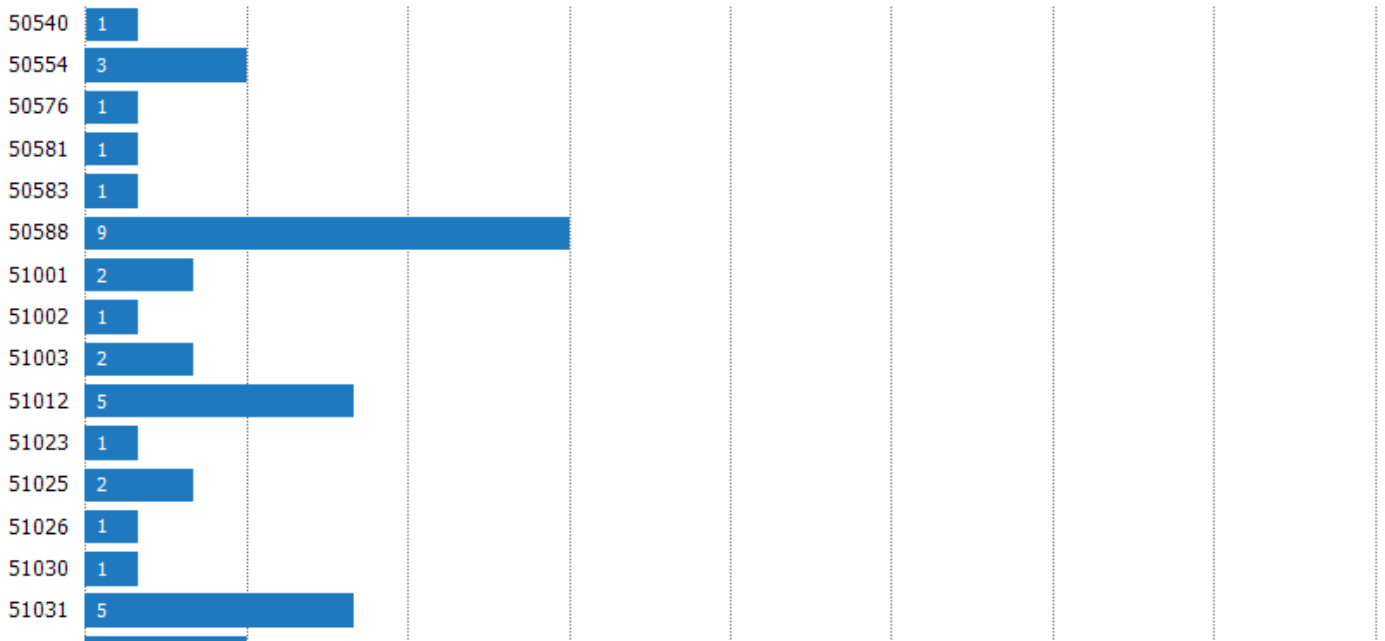
Filters Used: Property Type: Condo/Townhouse/Apt., Mobile/Manufactured, Multifamily/Multiplex, Other Residential, Single Family

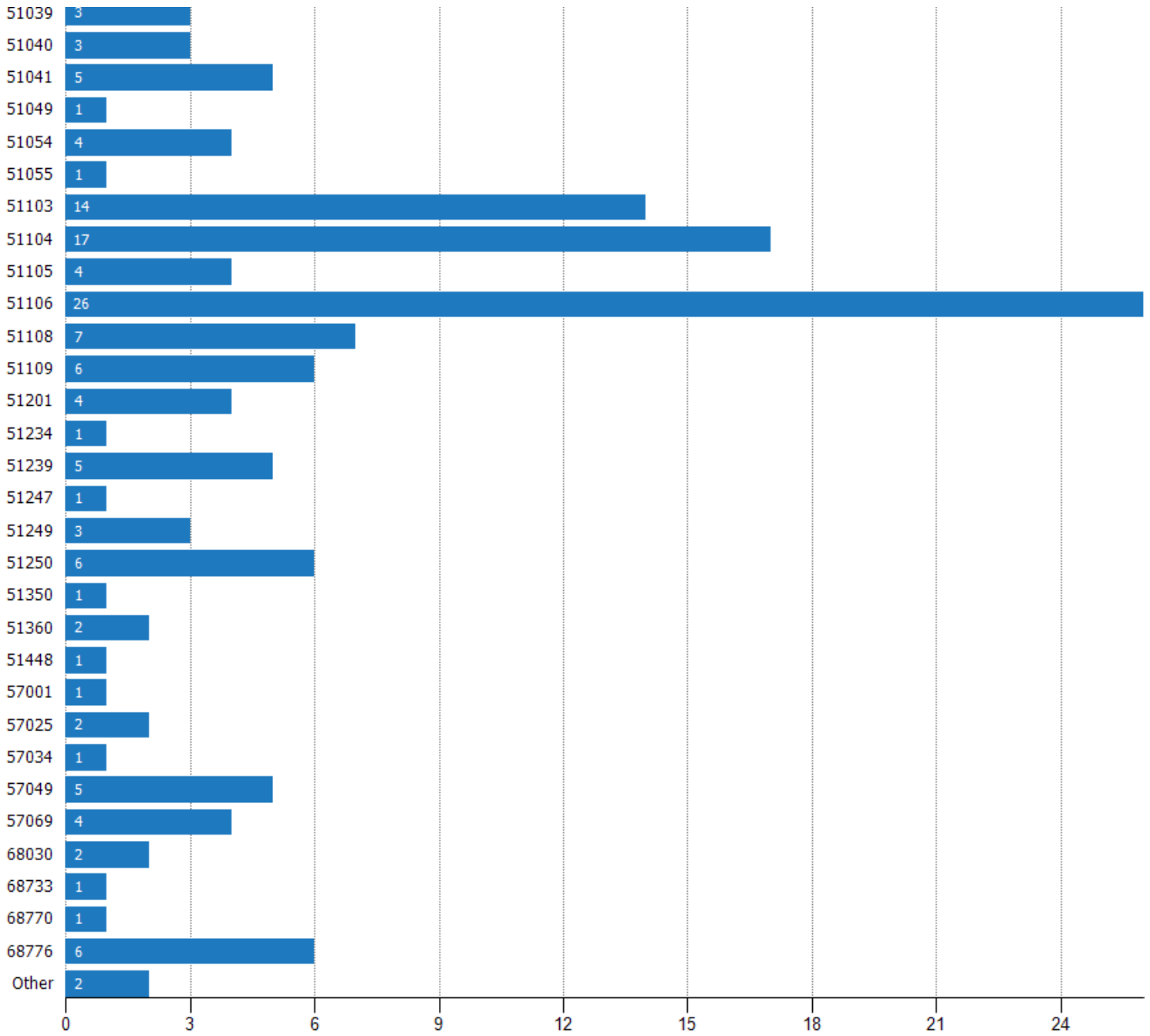


Closed Sales (By Zip)

The total number of residential properties sold during the last month by zip.

Filters Used: Property Type: Condo/Townhouse/Apt., Mobile/Manufactured, Multifamily/Multiplex, Other Residential, Single Family







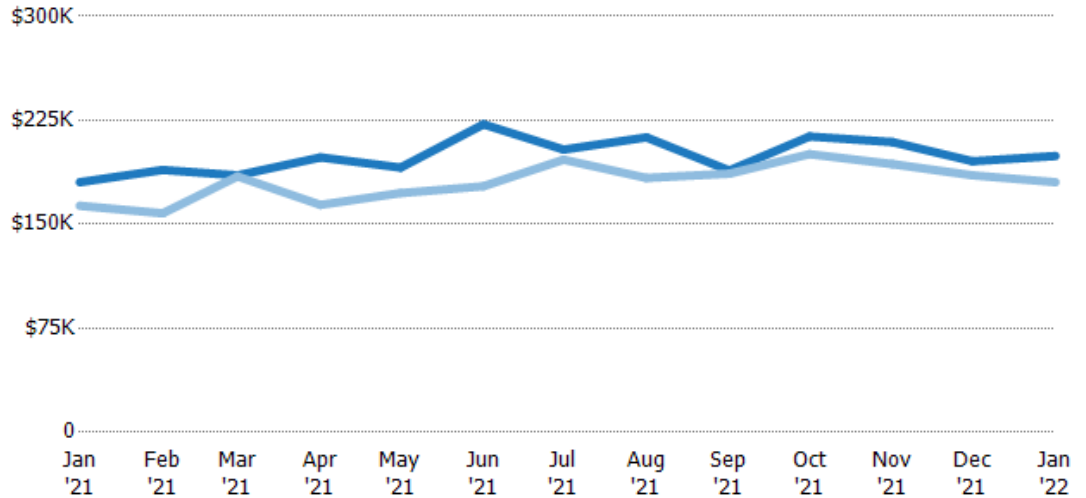
Average Sales Price

The average sales price of the residential properties sold each month.

Filters Used

Property Type:
Condo/Townhouse/Apt.,
Mobile/Manufactured,
Multifamily/Multiplex, Other
Residential, Single Family

Month/Year	Price	% Chg.
Jan '22	\$199K	10.5%
Jan '21	\$180K	10.4%
Jan '20	\$163K	-2.4%



Current Year	\$180K	\$189K	\$185K	\$198K	\$191K	\$222K	\$204K	\$213K	\$189K	\$213K	\$209K	\$195K	\$199K
Prior Year	\$163K	\$158K	\$185K	\$164K	\$172K	\$177K	\$197K	\$183K	\$187K	\$201K	\$193K	\$185K	\$180K
Percent Change from Prior Year	10%	20%	0%	21%	11%	25%	4%	16%	1%	6%	8%	5%	10%

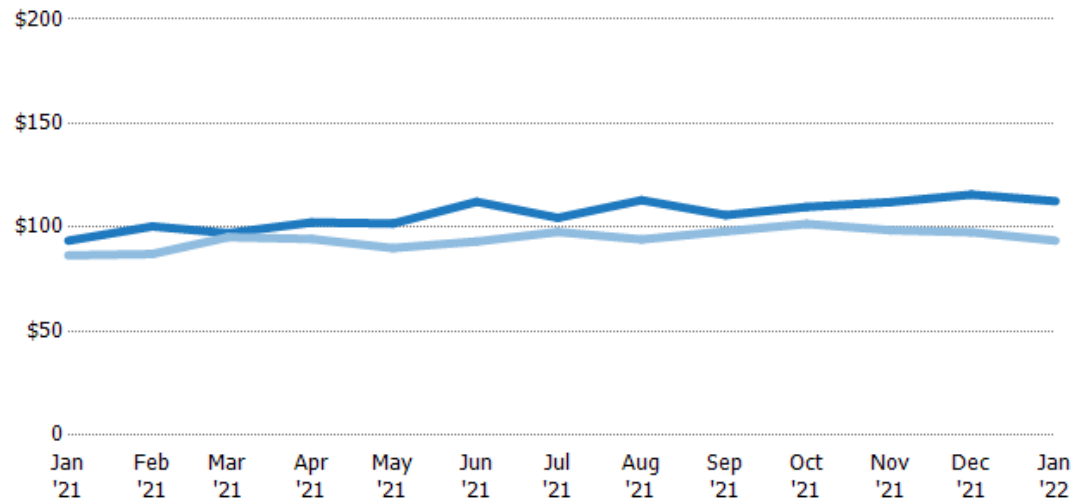
Average Sales Price per Sq Ft

The average of the sales price divided by the living area of properties sold each month.

Filters Used

Property Type:
Condo/Townhouse/Apt.,
Mobile/Manufactured,
Multifamily/Multiplex, Other
Residential, Single Family

Month/Year	Price/sq ft	% Chg.
Jan '22	\$113	20.3%
Jan '21	\$93.6	8.2%
Jan '20	\$86.5	0.4%



Current Year	\$93.6	\$100	\$97.2	\$102	\$102	\$112	\$105	\$113	\$106	\$110	\$112	\$116	\$113
Prior Year	\$86.5	\$87.1	\$95.2	\$94.4	\$90	\$93.2	\$97.7	\$94.2	\$98	\$102	\$98.6	\$97.6	\$93.6
Percent Change from Prior Year	8%	15%	2%	8%	13%	20%	7%	20%	8%	8%	14%	19%	20%



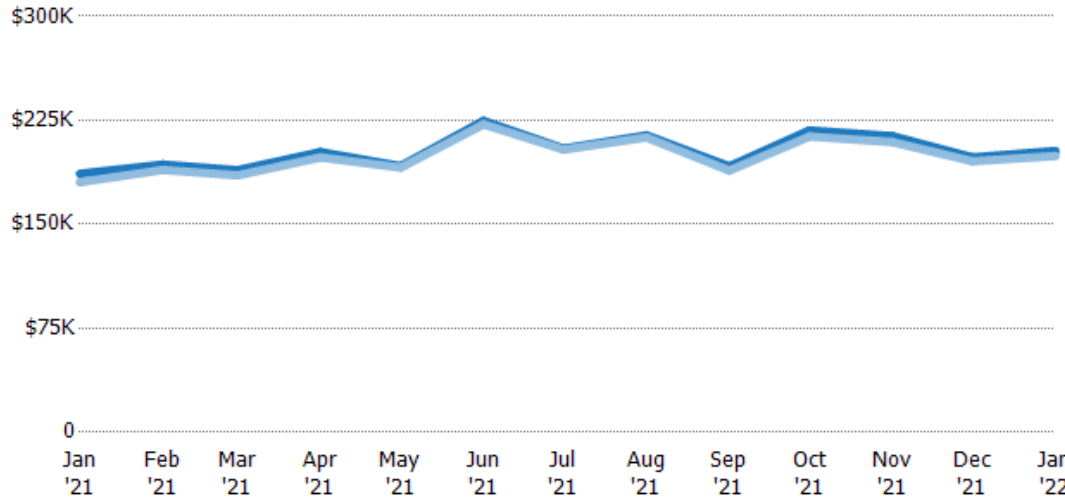


Average Sales Price vs Average Listing Price

The average sales price as a percentage of the average listing price for properties sold each month.

Filters Used

Property Type:
Condo/Townhouse/Apt.,
Mobile/Manufactured,
Multifamily/Multiplex, Other
Residential, Single Family



	Jan '21	Feb '21	Mar '21	Apr '21	May '21	Jun '21	Jul '21	Aug '21	Sep '21	Oct '21	Nov '21	Dec '21	Jan '22
Avg List Price	\$186K	\$193K	\$189K	\$202K	\$192K	\$225K	\$205K	\$214K	\$192K	\$218K	\$214K	\$198K	\$203K
Avg Sales Price	\$180K	\$189K	\$185K	\$198K	\$191K	\$222K	\$204K	\$213K	\$189K	\$213K	\$209K	\$195K	\$199K
Avg Sales Price as a % of Avg List Price	97%	98%	98%	98%	99%	99%	100%	99%	98%	98%	98%	99%	98%





Appendix

The metrics that are calculated by RPR® may show the same general trends as those published by other sources (i.e. MLS, Associations or vendors), but because of our processes and parcel-centric approach, some variation may occur. Data sources include MLS's, where licensed, and public records for more in-depth metrics on distressed properties.

Report Details

Report Name: NBS Report

Run Date: 02/04/2022

Scheduled: Yes

Report Date Range: From 1/2021 To: 1/2022

Information Included

- Include Cover Sheet
- Include Key Metric Summary *
- Include Metrics By: County, ZIP Code
- Averages
- Include Appendix
- Medians

* The Key Metrics Table's YTD median calculations are calculated using a weighted average of the median values for each month that is included.

MLS Filter

MLS: All

Listing Filters

Property Types: Condo/Townhouse/Apt. Mobile/Manufactured Multifamily/Multiplex
 Other Residential Single Family

Sales Types: All

Price Range: None

Location Filters

State: All

County: All

ZIP Code: All

Listing Activity Charts

- New Listings
- Active Listings
- Average Listing Price
- Average Listing Price per Sq Ft
- Average Listing Price vs Est Value
- Median Days in RPR
- Months of Inventory
- Absorption Rate

Sales Activity Charts

- Active/Pending/Sold
- New Pending Sales
- Pending Sales
- Closed Sales
- Average Sales Price
- Average Sales Price per Sq Ft
- Average Sales Price vs Listing Price
- Average Sales Price vs Est Value

Distressed Charts

- Distressed Listings
- Distressed Sales

Data Tables Using 1/2022 data

- Listing Activity by ZIP
- Listing Activity by Metro Area
- Sales Activity by ZIP
- Sales Activity by Metro Area

