



Summary of Key Listing and Sales Metrics

A summary of the key metrics selected to be included in the report. MLS sources where licensed.

Key Metrics	May 2021	May 2020	+ / -	YTD 2021	YTD 2020	+ / -
Listing Activity Charts Metrics						
New Listing Count	317	325	-2.5%	1,271	1,274	-0.2%
New Listing Volume	\$68,293,281	\$72,621,523	-6%	\$270,397,545	\$255,894,259	+5.7%
Active Listing Count	125	666	-81.2%	N/A	N/A	
Active Listing Volume	\$31,085,303	\$157,053,076	-80.2%	N/A	N/A	
Average Listing Price	\$248,682	\$235,815	+5.5%	\$261,482	\$217,963	+20%
Months of Inventory	0.5	3.6	-85.5%	1.7	3.7	-54.2%
Sales Activity Charts Metrics						
Closed Sales Count	244	219	+11.4%	1,023	873	+17.2%
Closed Sales Volume	\$47,303,768	\$38,208,583	+23.8%	\$194,718,511	\$148,565,354	+31.1%
Average Sales Price	\$193,868	\$174,468	+11.1%	\$190,341	\$170,178	+11.8%
Average Sales Price per Sq Ft	\$103	\$90	+13.5%	\$100	\$91	+9%



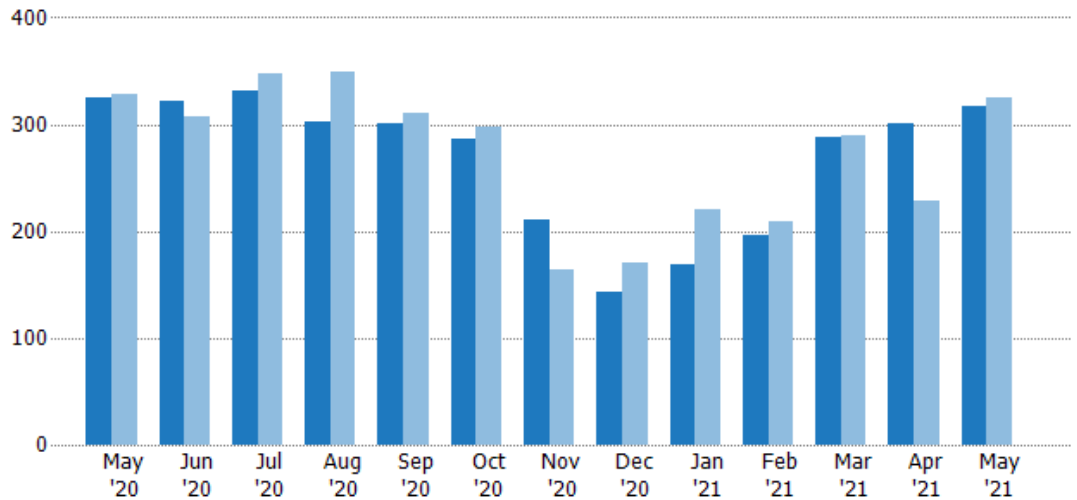
New Listings

The number of new residential listings that were added each month.

Filters Used

Property Type:
Condo/Townhouse/Apt.,
Mobile/Manufactured,
Multifamily/Multiplex, Other
Residential, Single Family

Month/Year	Count	% Chg.
May '21	317	-2.5%
May '20	325	-1.2%
May '19	329	-2.1%



Current Year	325	321	331	303	301	286	210	143	169	196	288	301	317
Prior Year	329	307	347	349	311	297	164	170	221	209	290	229	325
Percent Change from Prior Year	-1%	5%	-5%	-13%	-3%	-4%	28%	-16%	-24%	-6%	-1%	31%	-2%

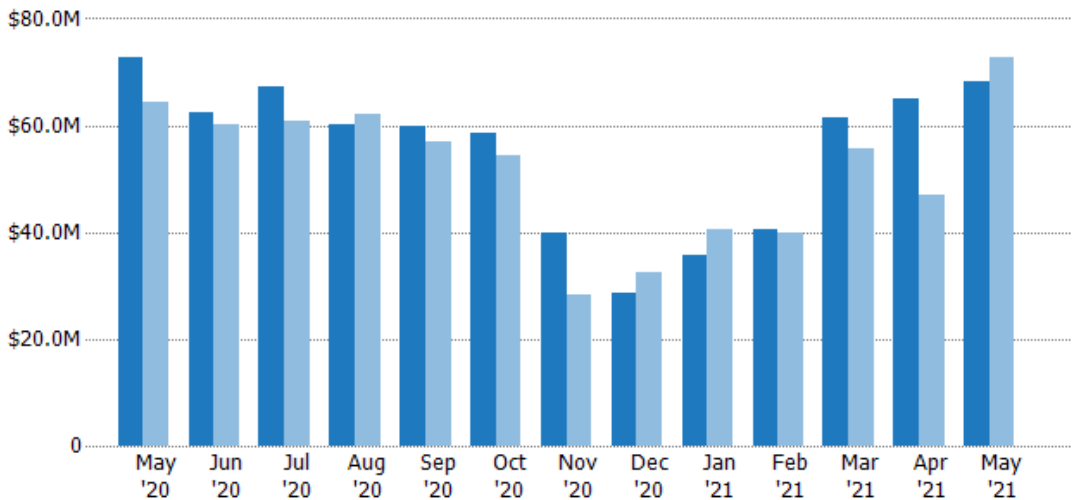
New Listing Volume

The sum of the listing price of residential listings that were added each month.

Filters Used

Property Type:
Condo/Townhouse/Apt.,
Mobile/Manufactured,
Multifamily/Multiplex, Other
Residential, Single Family

Month/Year	Volume	% Chg.
May '21	\$68.3M	-6%
May '20	\$72.6M	12.6%
May '19	\$64.5M	-9.1%



Current Year	\$72.6M	\$62.5M	\$67.4M	\$60.3M	\$59.8M	\$58.7M	\$40M	\$28.6M	\$35.5M	\$40.4M	\$61.3M	\$64.8M	\$68.3M
Prior Year	\$64.5M	\$60.1M	\$60.9M	\$62.1M	\$57M	\$54.3M	\$28.3M	\$32.3M	\$40.6M	\$40M	\$55.7M	\$47M	\$72.6M
Percent Change from Prior Year	13%	4%	11%	-3%	5%	8%	41%	-11%	-12%	1%	10%	38%	-6%



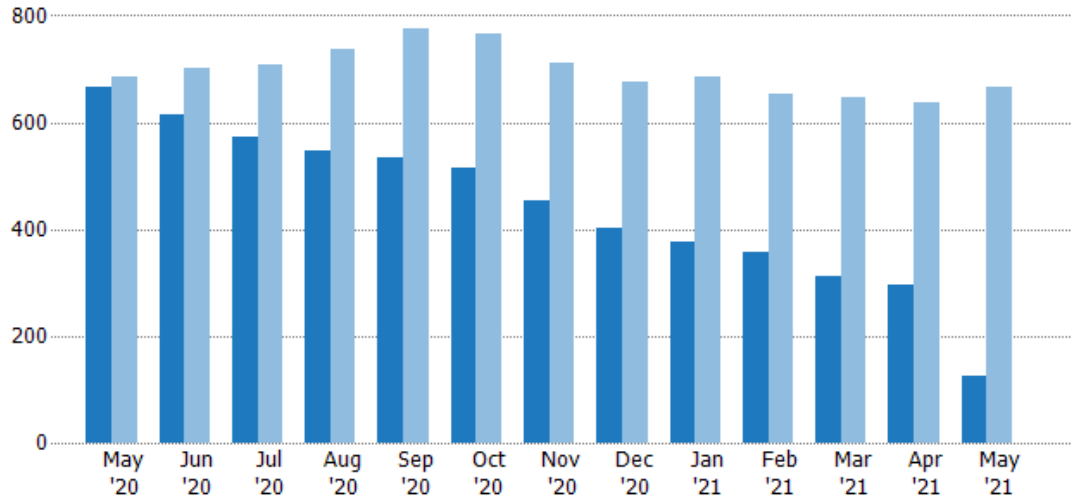
Active Listings

The number of active residential listings at the end of each month.

Filters Used

Property Type:
Condo/Townhouse/Apt.,
Mobile/Manufactured,
Multifamily/Multiplex, Other
Residential, Single Family

Month/Year	Count	% Chg.
May '21	125	-81.2%
May '20	666	-3.1%
May '19	687	-4.1%



	May '20	Jun '20	Jul '20	Aug '20	Sep '20	Oct '20	Nov '20	Dec '20	Jan '21	Feb '21	Mar '21	Apr '21	May '21
Current Year	666	616	574	548	533	516	454	401	377	358	313	296	125
Prior Year	687	700	707	736	776	765	710	675	684	654	648	637	666
Percent Change from Prior Year	-3%	-12%	-19%	-26%	-31%	-33%	-36%	-41%	-45%	-45%	-52%	-54%	-81%

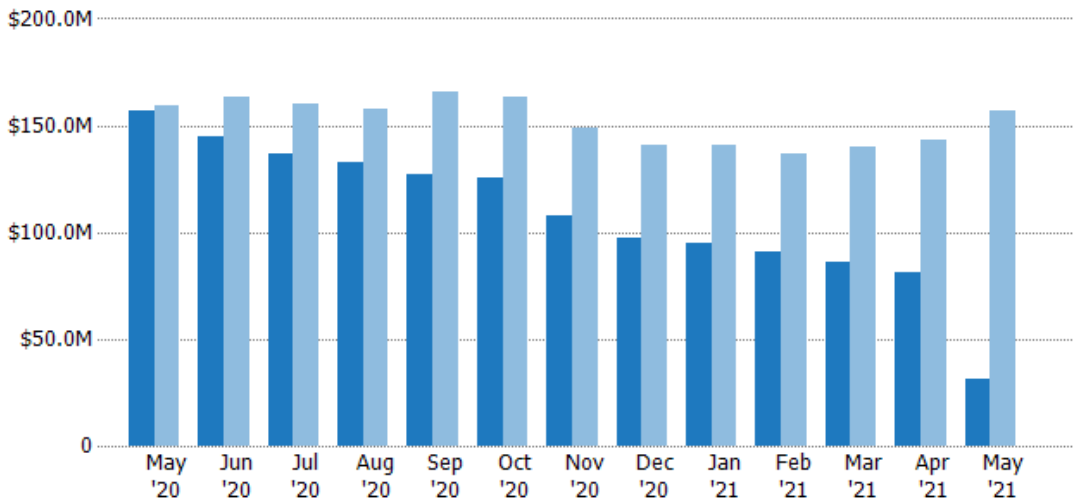
Active Listing Volume

The sum of the listing price of active residential listings at the end of each month.

Filters Used

Property Type:
Condo/Townhouse/Apt.,
Mobile/Manufactured,
Multifamily/Multiplex, Other
Residential, Single Family

Month/Year	Volume	% Chg.
May '21	\$31.1M	-80.2%
May '20	\$157M	-1.2%
May '19	\$159M	-10.6%



	May '20	Jun '20	Jul '20	Aug '20	Sep '20	Oct '20	Nov '20	Dec '20	Jan '21	Feb '21	Mar '21	Apr '21	May '21
Current Year	\$157M	\$145M	\$137M	\$133M	\$127M	\$125M	\$108M	\$97.1M	\$95M	\$90.5M	\$86.2M	\$81.4M	\$31.1M
Prior Year	\$159M	\$163M	\$160M	\$158M	\$166M	\$163M	\$149M	\$141M	\$140M	\$137M	\$140M	\$143M	\$157M
Percent Change from Prior Year	-1%	-11%	-15%	-16%	-24%	-23%	-27%	-31%	-32%	-34%	-38%	-43%	-80%



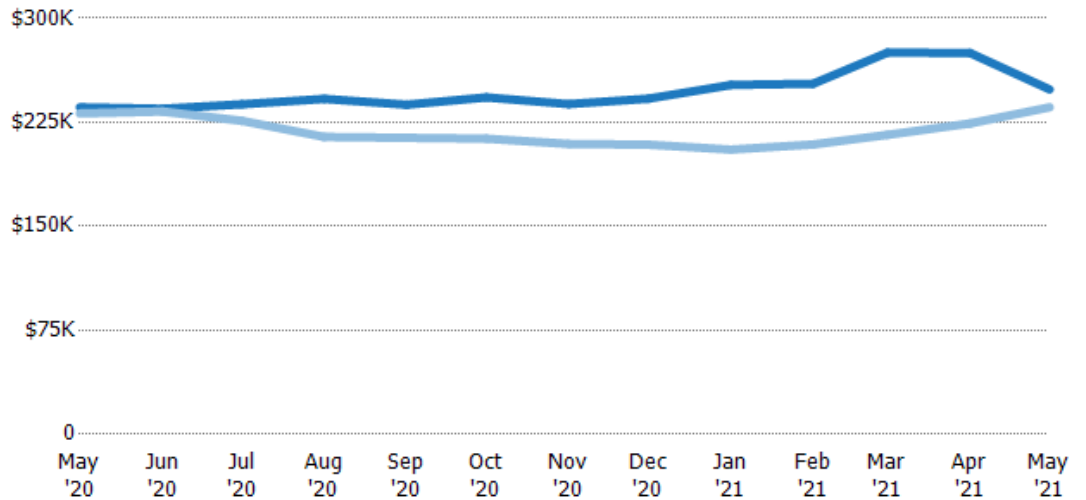
Average Listing Price

The average listing price of active residential listings at the end of each month.

Filters Used

Property Type:
Condo/Townhouse/Apt.,
Mobile/Manufactured,
Multifamily/Multiplex, Other
Residential, Single Family

Month/Year	Price	% Chg.
May '21	\$249K	5.5%
May '20	\$236K	1.9%
May '19	\$231K	-6.8%



Current Year	\$236K	\$235K	\$238K	\$242K	\$238K	\$243K	\$238K	\$242K	\$252K	\$253K	\$275K	\$275K	\$249K
Prior Year	\$231K	\$233K	\$226K	\$214K	\$214K	\$213K	\$209K	\$209K	\$205K	\$209K	\$216K	\$224K	\$236K
Percent Change from Prior Year	2%	1%	5%	13%	11%	14%	14%	16%	23%	21%	27%	23%	5%

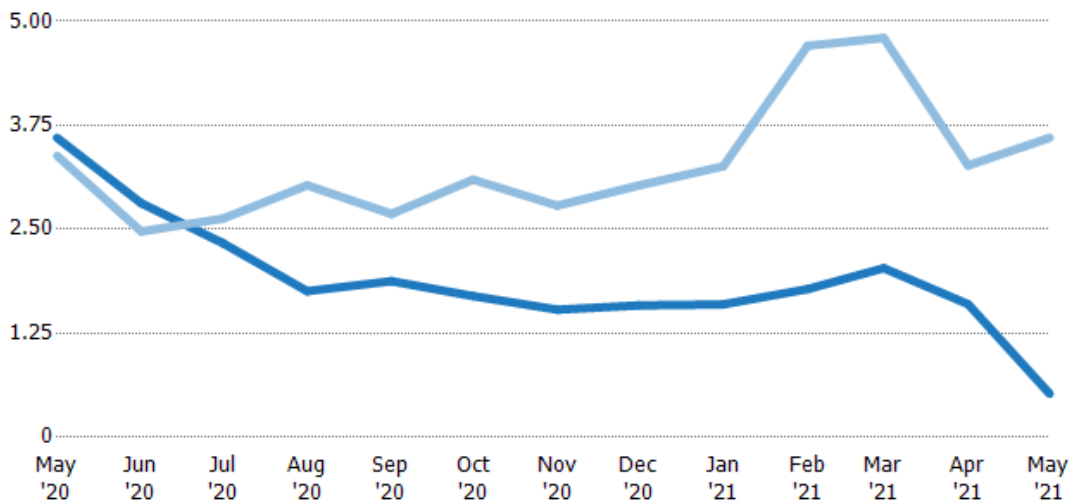
Months of Inventory

The number of months it would take to exhaust active listings at the current sales rate.

Filters Used

Property Type:
Condo/Townhouse/Apt.,
Mobile/Manufactured,
Multifamily/Multiplex, Other
Residential, Single Family

Month/Year	Months	% Chg.
May '21	0	-85.5%
May '20	3.6	6.4%
May '19	3.38	13.2%



Current Year	3.6	2.81	2.33	1.76	1.88	1.7	1.53	1.58	1.6	1.78	2.03	1.6	0
Prior Year	3.38	2.47	2.63	3.03	2.69	3.1	2.78	3.03	3.26	4.71	4.8	3.27	3.6
Percent Change from Prior Year	6%	14%	-11%	-42%	-30%	-45%	-45%	-48%	-51%	-62%	-58%	-51%	-85%



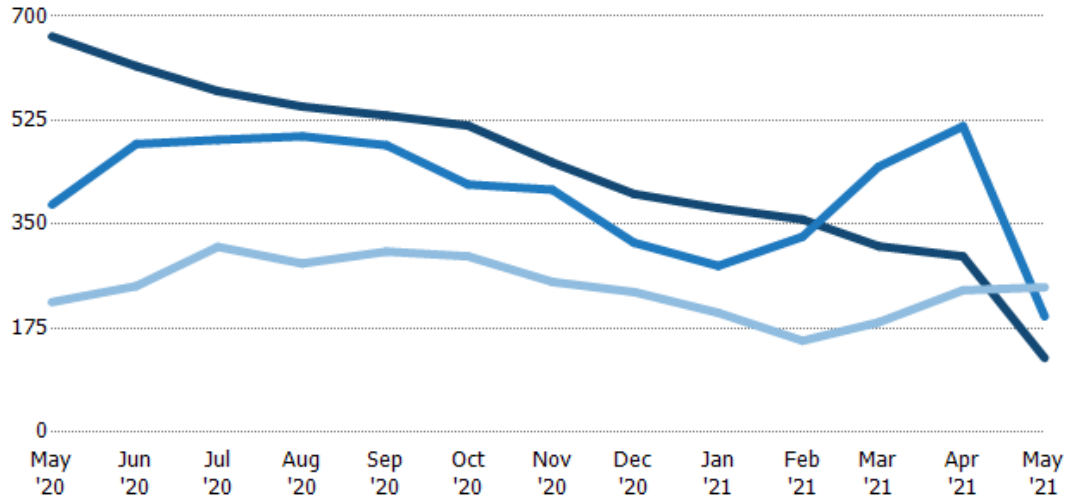


Active/Pending/Sold Units

The number of residential properties that were Active, Pending and Sold each month.

Filters Used

Property Type:
Condo/Townhouse/Apt.,
Mobile/Manufactured,
Multifamily/Multiplex, Other
Residential, Single Family



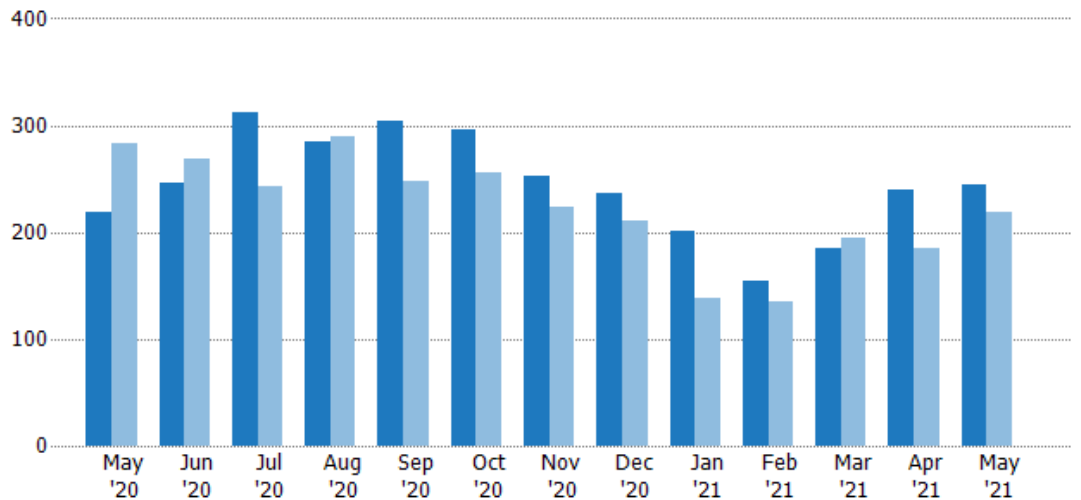
	May '20	Jun '20	Jul '20	Aug '20	Sep '20	Oct '20	Nov '20	Dec '20	Jan '21	Feb '21	Mar '21	Apr '21	May '21
Active	666	616	574	548	533	516	454	401	377	358	313	296	125
Pending	383	485	492	498	483	417	408	319	280	329	447	515	195
Sold	219	246	312	284	304	296	253	236	201	154	185	239	244

Closed Sales

The total number of residential properties sold each month.

Filters Used

Property Type:
Condo/Townhouse/Apt.,
Mobile/Manufactured,
Multifamily/Multiplex, Other
Residential, Single Family



	May '20	Jun '20	Jul '20	Aug '20	Sep '20	Oct '20	Nov '20	Dec '20	Jan '21	Feb '21	Mar '21	Apr '21	May '21
Current Year	219	246	312	284	304	296	253	236	201	154	185	239	244
Prior Year	283	269	243	289	247	255	223	210	139	135	195	185	219
Percent Change from Prior Year	-23%	-9%	28%	-2%	23%	16%	13%	12%	45%	14%	-5%	29%	11%





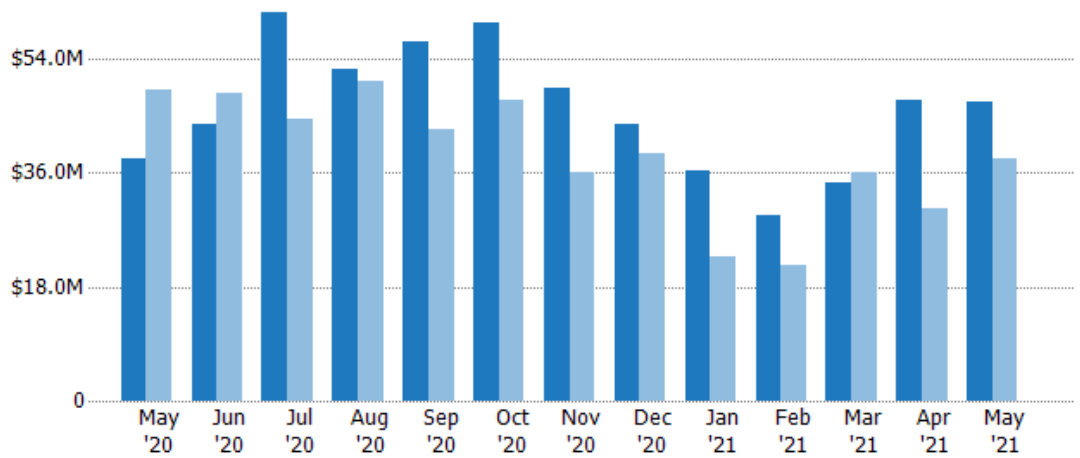
Closed Sales Volume

The sum of the sales price of residential properties sold each month.

Filters Used

Property Type:
Condo/Townhouse/Apt.,
Mobile/Manufactured,
Multifamily/Multiplex, Other
Residential, Single Family

Month/ Year	Volume	% Chg.
May '21	\$47.3M	23.8%
May '20	\$38.2M	-22.3%
May '19	\$49.2M	-14.4%



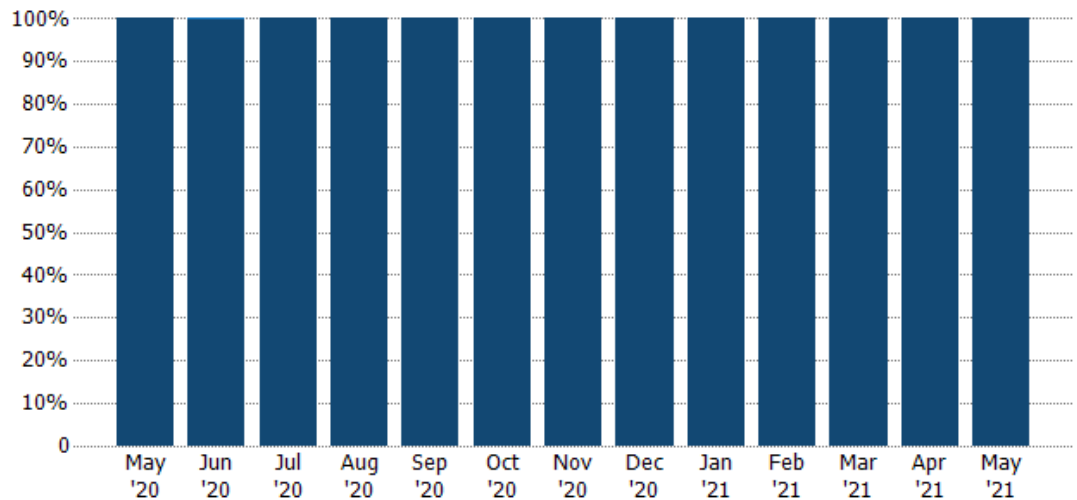
Current Year	\$38.2M	\$43.6M	\$61.4M	\$52.3M	\$56.7M	\$59.8M	\$49.5M	\$43.6M	\$36.2M	\$29.3M	\$34.4M	\$47.5M	\$47.3M
Prior Year	\$49.2M	\$48.5M	\$44.4M	\$50.4M	\$42.8M	\$47.4M	\$36.2M	\$38.9M	\$22.6M	\$21.3M	\$36.1M	\$30.3M	\$38.2M
Percent Change from Prior Year	-22%	-10%	38%	4%	33%	26%	37%	12%	60%	38%	-5%	57%	24%

Closed Sales by Property Type

The percentage of residential properties sold each month by property type.

Filters Used

Property Type:
Condo/Townhouse/Apt.,
Mobile/Manufactured,
Multifamily/Multiplex, Other
Residential, Single Family



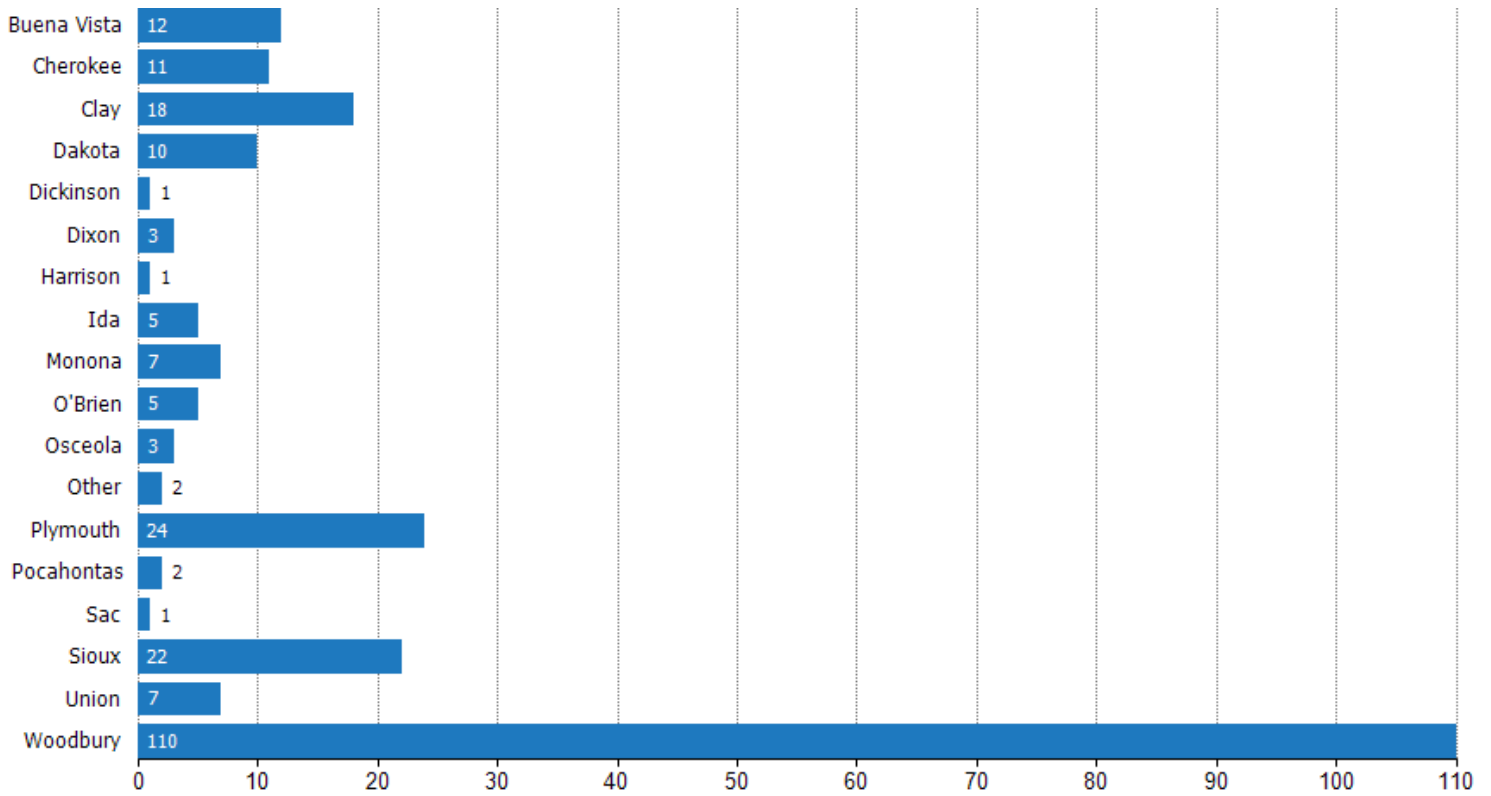
Condo/Townhouse	-	0%	-	-	-	-	-	-	-	-	-	-	-
Single Family Residence	100%	100%	100%	100%	100%	100%	100%	100%	100%	100%	100%	100%	100%



Closed Sales (By County)

The total number of residential properties sold during the last month by county.

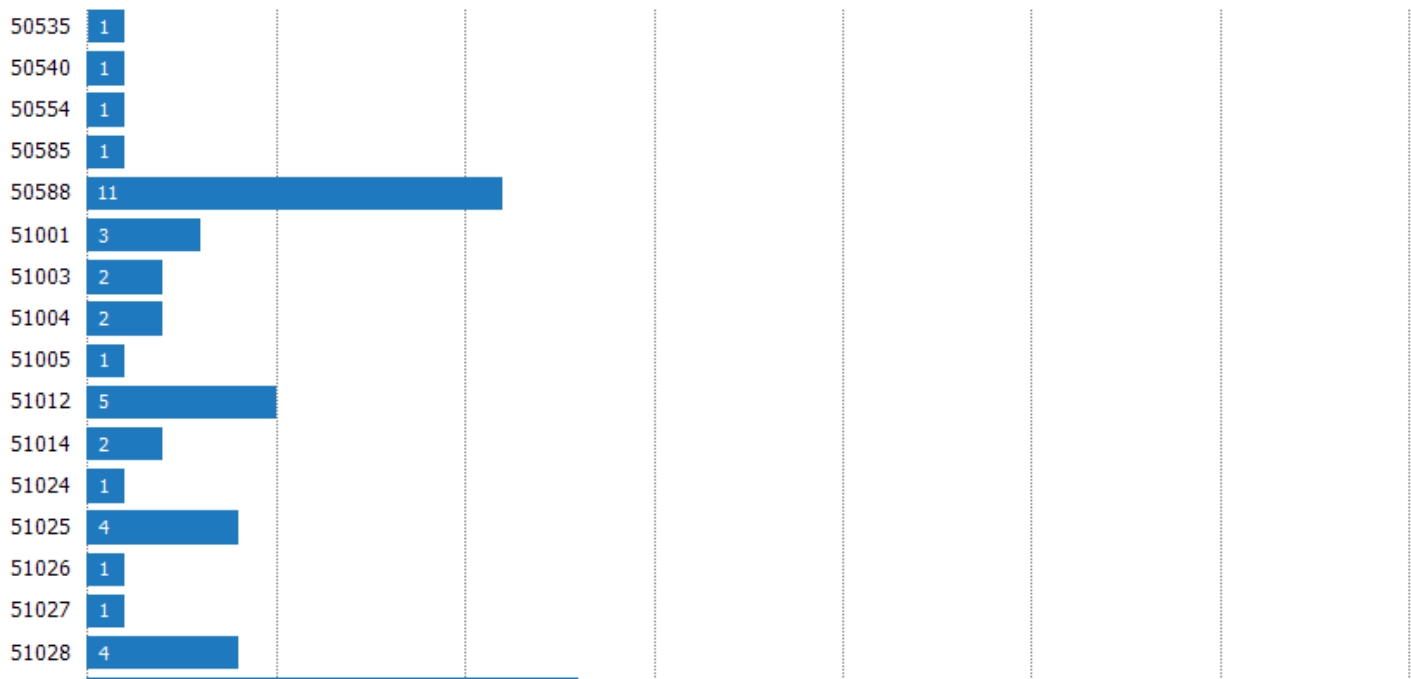
Filters Used: Property Type: Condo/Townhouse/Apt., Mobile/Manufactured, Multifamily/Multiplex, Other Residential, Single Family

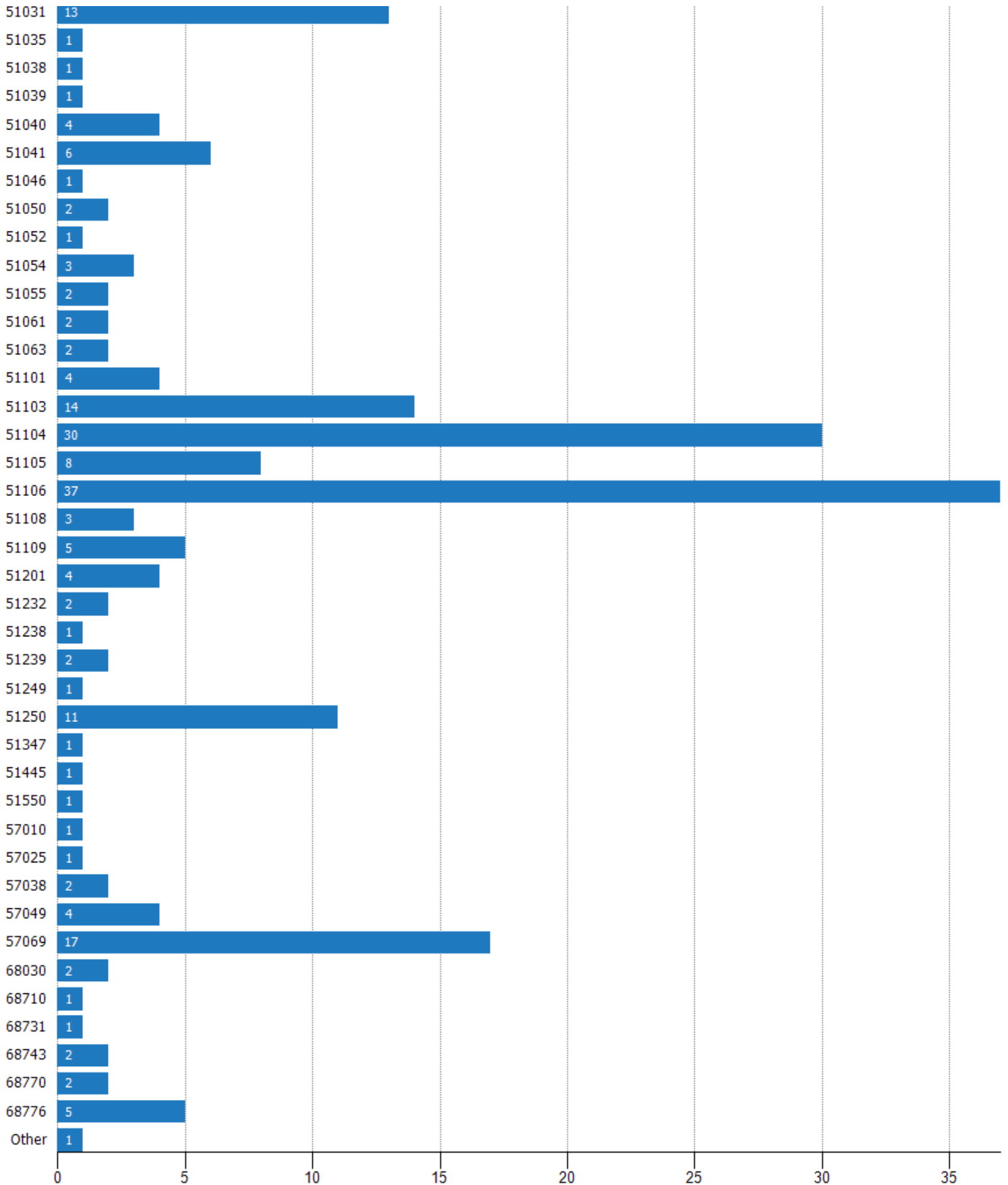


Closed Sales (By Zip)

The total number of residential properties sold during the last month by zip.

Filters Used: Property Type: Condo/Townhouse/Apt., Mobile/Manufactured, Multifamily/Multiplex, Other Residential, Single Family







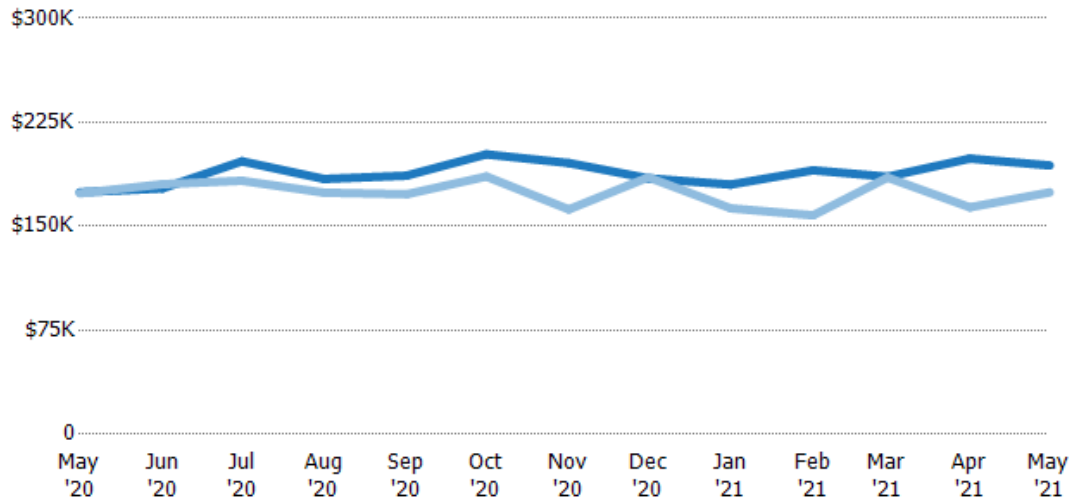
Average Sales Price

The average sales price of the residential properties sold each month.

Filters Used

Property Type:
Condo/Townhouse/Apt.,
Mobile/Manufactured,
Multifamily/Multiplex, Other
Residential, Single Family

Month/ Year	Price	% Chg.
May '21	\$194K	11.1%
May '20	\$174K	0.4%
May '19	\$174K	-6.1%



Current Year	\$174K	\$177K	\$197K	\$184K	\$187K	\$202K	\$196K	\$185K	\$180K	\$190K	\$186K	\$199K	\$194K
Prior Year	\$174K	\$180K	\$183K	\$174K	\$173K	\$186K	\$162K	\$185K	\$163K	\$158K	\$185K	\$164K	\$174K
Percent Change from Prior Year	0%	-2%	8%	6%	8%	9%	21%	0%	11%	21%	0%	21%	11%

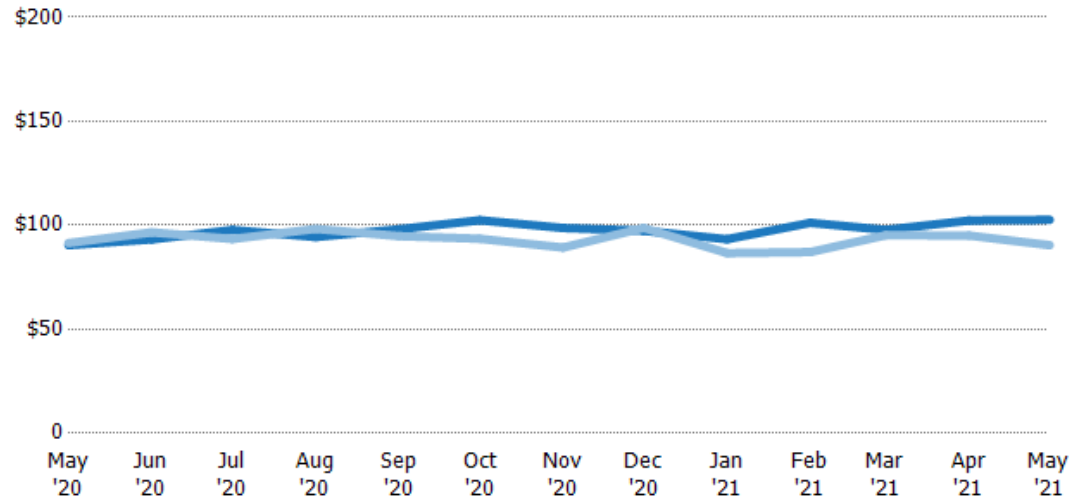
Average Sales Price per Sq Ft

The average of the sales price divided by the living area of properties sold each month.

Filters Used

Property Type:
Condo/Townhouse/Apt.,
Mobile/Manufactured,
Multifamily/Multiplex, Other
Residential, Single Family

Month/ Year	Price/sq ft	% Chg.
May '21	\$103	13.5%
May '20	\$90.4	-1.1%
May '19	\$91.5	3.3%



Current Year	\$90.4	\$93.2	\$97.8	\$94.3	\$98.1	\$102	\$98.7	\$97.4	\$93.3	\$101	\$97.8	\$102	\$103
Prior Year	\$91.5	\$96.6	\$93.4	\$98.3	\$94.8	\$93.5	\$89.3	\$98.7	\$86.6	\$87.1	\$95.2	\$95.1	\$90.4
Percent Change from Prior Year	-1%	-4%	5%	-4%	4%	10%	11%	-1%	8%	16%	3%	8%	13%



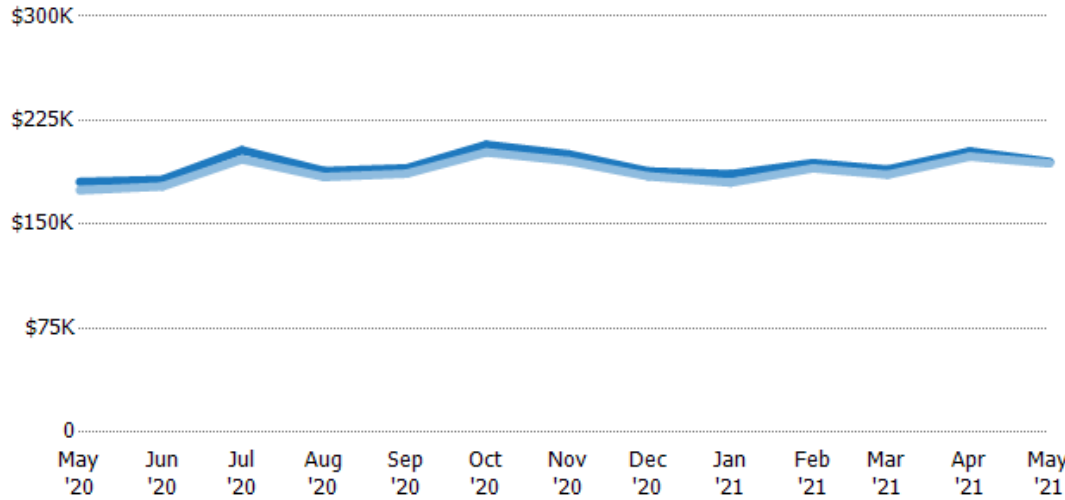


Average Sales Price vs Average Listing Price

The average sales price as a percentage of the average listing price for properties sold each month.

Filters Used

Property Type:
Condo/Townhouse/Apt.,
Mobile/Manufactured,
Multifamily/Multiplex, Other
Residential, Single Family



	May '20	Jun '20	Jul '20	Aug '20	Sep '20	Oct '20	Nov '20	Dec '20	Jan '21	Feb '21	Mar '21	Apr '21	May '21
Avg List Price	\$181K	\$182K	\$203K	\$188K	\$190K	\$207K	\$200K	\$188K	\$186K	\$194K	\$189K	\$203K	\$195K
Avg Sales Price	\$174K	\$177K	\$197K	\$184K	\$187K	\$202K	\$196K	\$185K	\$180K	\$190K	\$186K	\$199K	\$194K
Avg Sales Price as a % of Avg List Price	97%	97%	97%	98%	98%	97%	98%	98%	97%	98%	98%	98%	99%



Appendix

The metrics that are calculated by RPR® may show the same general trends as those published by other sources (i.e. MLS, Associations or vendors), but because of our processes and parcel-centric approach, some variation may occur. Data sources include MLS's, where licensed, and public records for more in-depth metrics on distressed properties.

Report Details

Report Name: NBS Report
Run Date: 06/09/2021
Scheduled: No
Report Date Range: From 5/2020 To: 5/2021

Information Included

- Include Cover Sheet
- Include Key Metric Summary *
- Include Metrics By: County, ZIP Code
- Averages
- Include Appendix
- Medians

* The Key Metrics Table's YTD median calculations are calculated using a weighted average of the median values for each month that is included.

MLS Filter

MLS: All

Listing Filters

Property Types: Condo/Townhouse/Apt. Mobile/Manufactured Multifamily/Multiplex
Other Residential Single Family

Sales Types: All

Price Range: None

Location Filters

State: All

County: All

ZIP Code: All

Listing Activity Charts

- New Listings
- Active Listings
- Average Listing Price
- Average Listing Price per Sq Ft
- Average Listing Price vs Est Value
- Median Days in RPR
- Months of Inventory
- Absorption Rate

Sales Activity Charts

- Active/Pending/Sold
- New Pending Sales
- Pending Sales
- Closed Sales
- Average Sales Price
- Average Sales Price per Sq Ft
- Average Sales Price vs Listing Price
- Average Sales Price vs Est Value

Distressed Charts

- Distressed Listings
- Distressed Sales

Data Tables Using 5/2021 data

- Listing Activity by ZIP
- Listing Activity by Metro Area
- Sales Activity by ZIP
- Sales Activity by Metro Area

